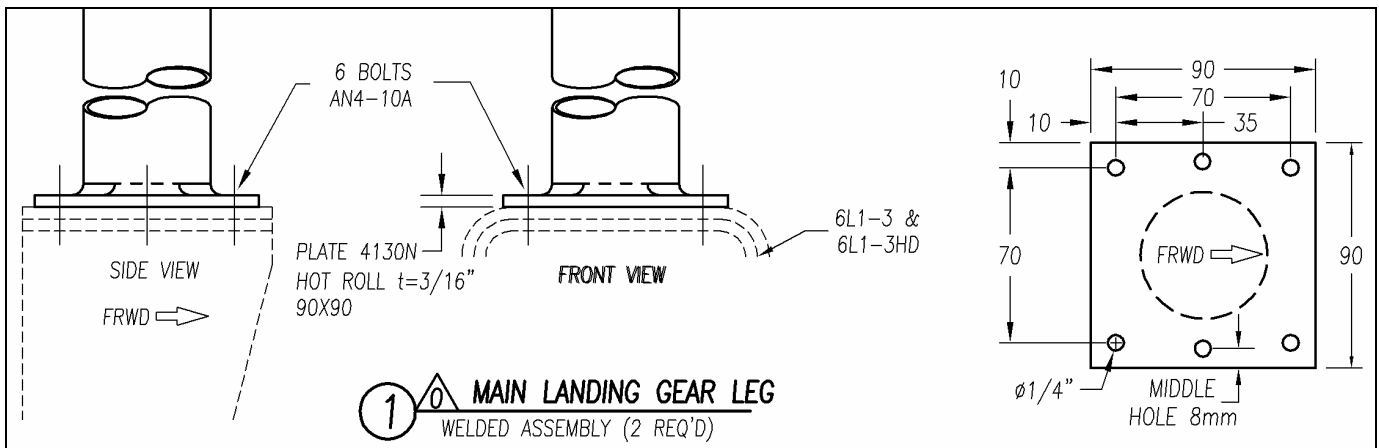


**ZODIAC CH 601 UL, HD and HDS  
 MAIN LANDING GEAR LEG BOTTOM PLATE (6L1-1) THICKNESS = 3/16"**



Designer Chris Heintz recommends replacement of the original 1/8" gear leg attachment plate with a larger 3/16" plate. There have been some reports of cracking along the weld and weld failures with the original 1/8" plate.  
 Ref. Zenair newsletter #147

Replacement gear leg 6L1-1 priced at \$58.00 each + shipping/handling, available from Zenith Aircraft Co.



Note: The thicker gear plates were incorporated in Zodiac CH 601 HD drawings, 4<sup>th</sup> edition 1<sup>st</sup> revision (4/2001).

The gear leg bottom attachment plate: The original 70x70 mm., thickness = 1/8", should be replaced with plates 90x90 mm. thickness = 3/16".

November 27, 2006



CH 601 HD and HDS, with wheel fork doubler 6L1-3HD.