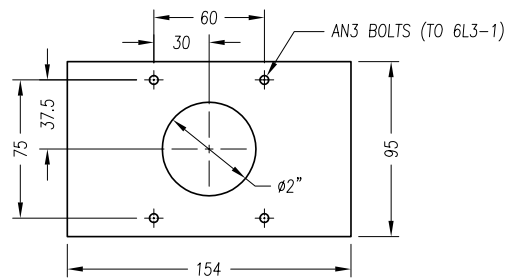
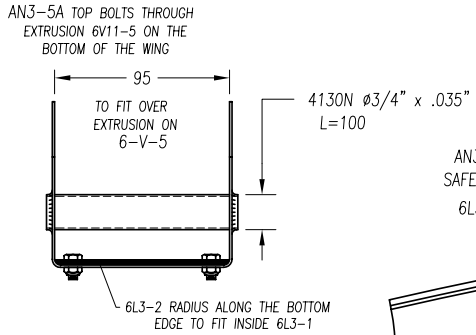


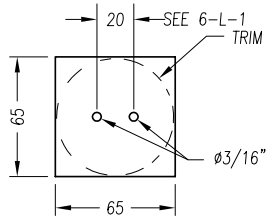
① LOWER BEARING SUPPORT  
STEEL t=.050"



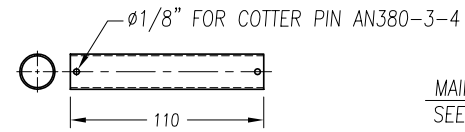
② LOWER BEARING  
t=.125" (2 REQ'D)



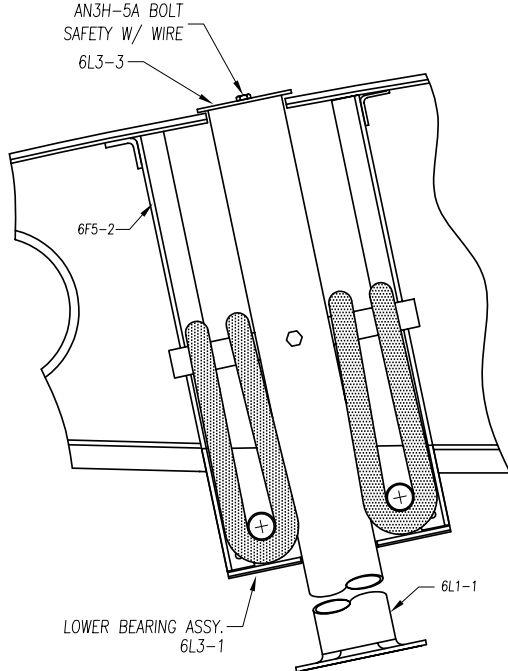
6L3-2 RADIUS ALONG THE BOTTOM EDGE TO FIT INSIDE 6L3-1



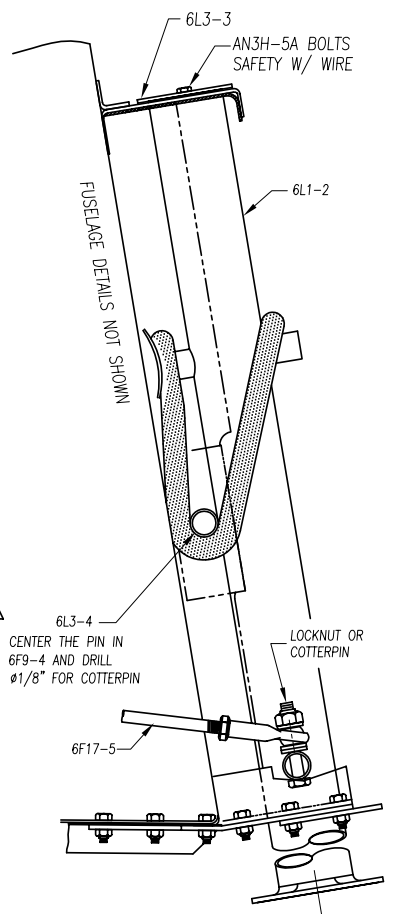
③ STOP PLATE  
ALUMINUM t=.090" (3 REQ'D)



④ PIN  
 $\phi 5/8"$  x .058" WALL 4130N TUBE



MAIN LANDING GEAR ASSEMBLY IN RIB BOX  
SEE 6-V-5 (SHOCK CORD "TAYLOR" 1080HD)  
(5/8"X8" 900# 5 REQ'D)



NOSE GEAR ASSEMBLY

DWG. 6-L-2  
HAS BEEN DELETED

ZODIAC CH 601 HD	LOWER BEARING & SUPPORT GEAR LEG INSTALLATION GEAR LEG STOP PLATE	6-L-3
	copyright ©2001 Zenith Aircraft Company zenithair.com	

EDITION: 4th 05/01