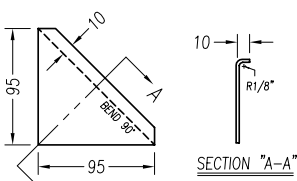
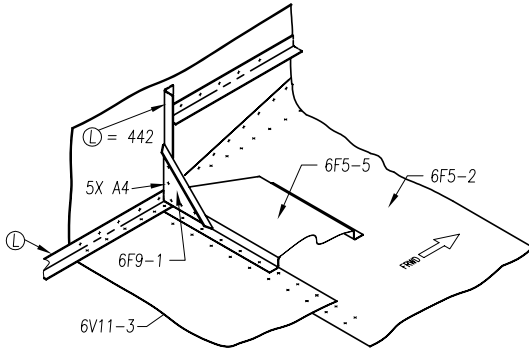
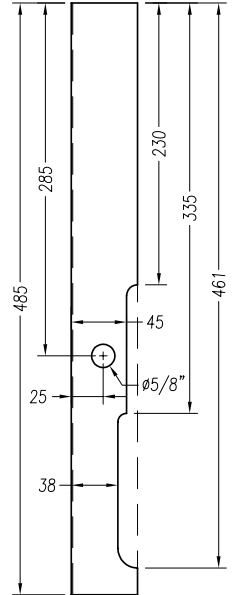
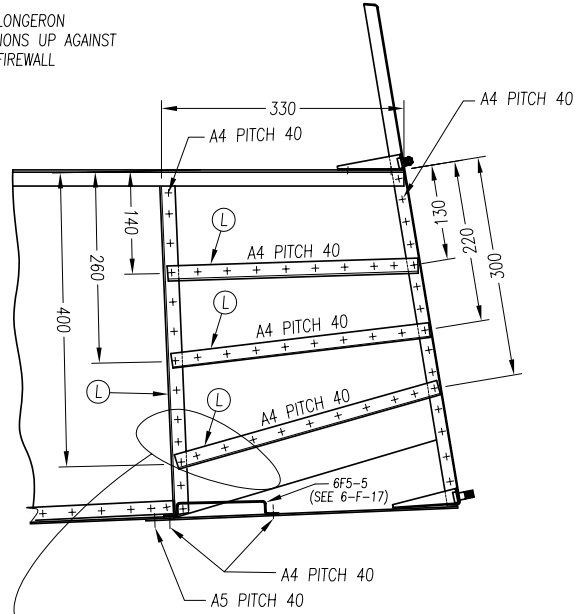
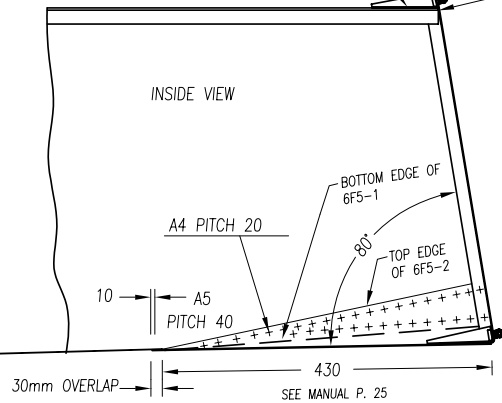


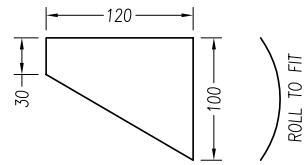
THE FLANGE OF THE UPPER FITTING 6F7-2 ARE ON THE INSIDE (OPPOSITE TO THE BOTTOM FITTING 6F7-3 WITH THE FLANGE ON THE OUTSIDE).

TEMPORARILY CLAMP THE FITTING TO THE LONGERON. DRILL THE 2X AN3 BOLTS WHEN 6F5-1HD IS IN PLACE.

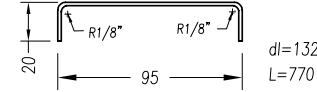
THE LONGERON POSITIONS UP AGAINST THE FIREWALL



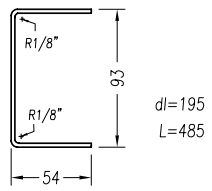
1 GUSSET
t=.025" (4 REQ'D)



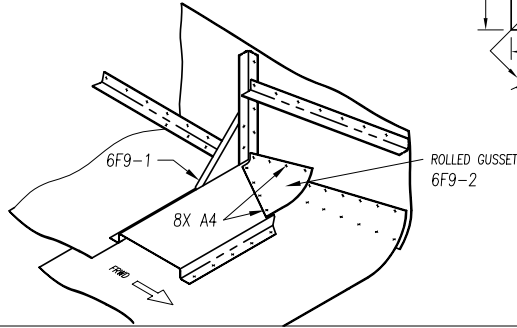
2 ROLLED GUSSET
t=.016" (2 REQ'D, 1L & 1R)



3HD FLOOR STIFFENER
t=.032" (1 REQ'D)



4 CENTER FIREWALL STIFFENER
t=.040" (1 REQ'D)



ZODIAC CH 601 HD	FIREWALL-FUSELAGE RIVETING GUSSET, FAIRINGS & STIFFENERS	6-F-9
	copyright ©2001 Zenith Aircraft Company zenithair.com <small>EDITION 4th 05/01</small>	