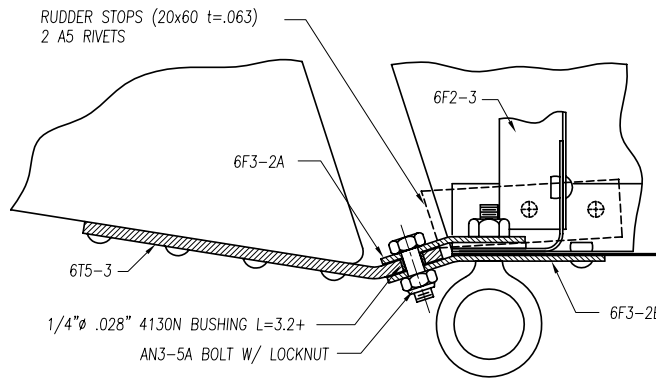
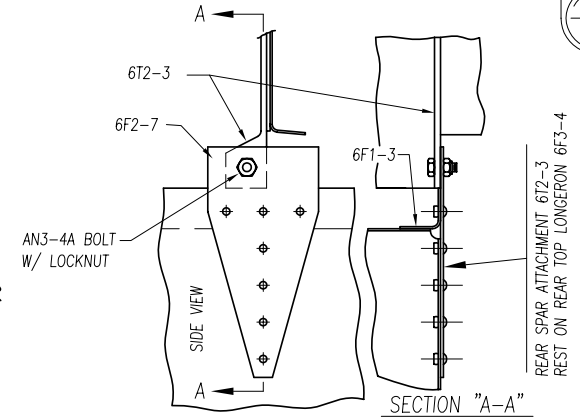


SADDLE INSTALL TO CLEAR THE TOP OF 6T3-4 WITH THE ELEVATOR IN THE DOWN POSITION.
FRONT OF SADDLE IS UNDERNEATH 6F14-2 WITH 5XA4
LINE UP THE TOP WITH THE LEADING EDGE OF THE RUDDER.
RIVET THE SIDE OF THE SADDLE TO A BENT ANGLE
RIVETED TO THE TOP SURFACE OF THE STABILIZER
APPROX LENGTH =100, 2REQ'D 3XA4 IN EACH FLANGE.

UPPER RUDDER HINGE ASSEMBLY

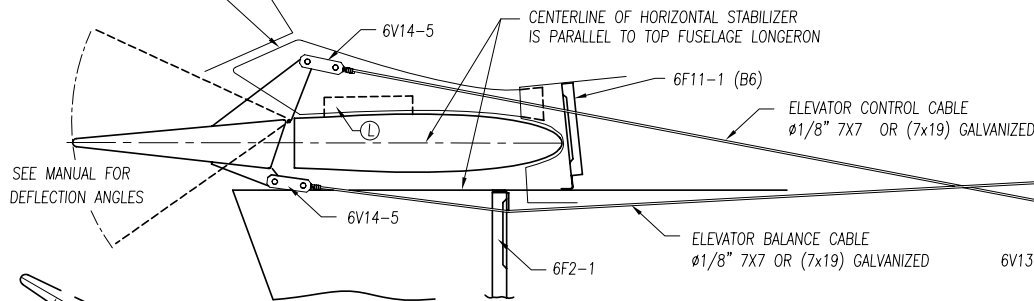


LOWER RUDDER HINGE ASSEMBLY

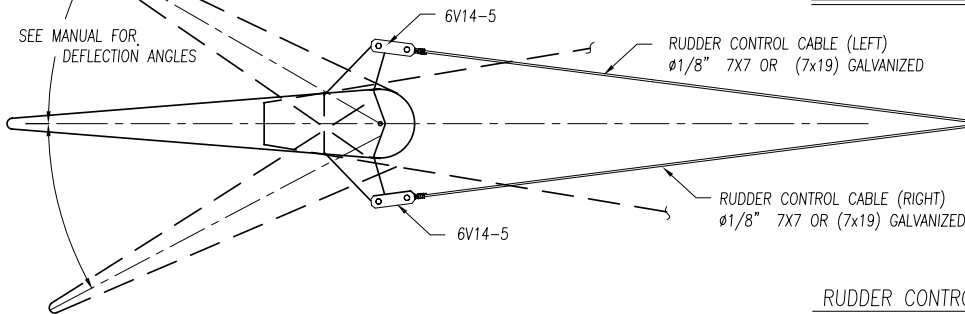


HORIZ. STABILIZER REAR ATTACHMENT ASSEMBLY

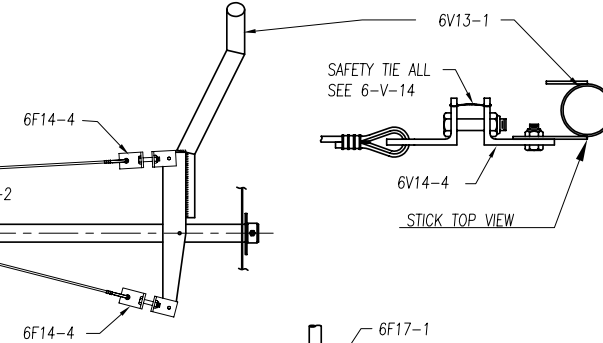
FRONT ATTACHMENT ASSEMBLY IS THE SAME



ELEVATOR CONTROL SYSTEM



RUDDER CONTROL SYSTEM



STICK TOP VIEW

ZODIAC
CH 601 HD

HORIZONTAL AND VERTICAL
TAIL INSTALLATION DETAILS
CONTROL CABLE INSTALLATION

6-F-15

copyright ©2001 Zenith Aircraft Company zenithair.com FORM 4th 05/01