

STOL CH 801

WING STRUT FAIRING OPTION



Photo of left wing



detail of Gear strut fitting (left side – top view)

Install the rear fairing first, no trimming is required to the leading edge or to the trailing edge.



left side view from front

Note: The bottom end of the fairing still allows access to the attachment bolts.



Cut a slot in the top side to make room for the welded gusset on the Gear Strut fitting

The trailing edge starts at the fuselage.

top view looking down – left side



Cutout on the bottom side to clear the gusset.

Bottom view, looking forward – left side



End of inboard fairing is on the inboard side of the jury strut

O/B portion fits inside the I/B fairing

The ends are square, no trimming required

Looking down along trailing edge.



View of trailing edge and the jury strut.



Cutout for Jury strut.

The overlap of the I/B and O/B fairings is below the Jury strut.

Photo of strut leading edge looking down towards the fuselage (left side)



Showing under side of fairing at the jury strut.

COMMENT: the nut for the jury strut is not accessible!



front view - left side



Two A4 rivets in the rear bottom wing skin



In this photo the top O/B end was made in 2 pieces, they overlap and are riveted together.



Cutout (slot) to make room for the Rear Strut Pick Up 8V4-4

Looking towards the wing tip



**TOP FAIRING
MATERIAL t=.016”
WSF-4**

Attachment along the O/B
edge with a piece of L
angle.



One piece top fairing

View from front – looking up – Left side



Install the top fairing.
The Top end of the O/B
fairing is trimmed flush to
the Top Fairing

Note: there is a bend
along the bottom I/B end
of the Top fairing

View from rear – looking up – left side
The Top Fairing is only installed at the top of the front O/B fairings.



The trailing edges of the
Top Fairing come
together on both sides of
the Front Strut Stiffener
8F8-1A, one rivet at the
end.

L angle in the corner of the bottom wing skin riveted along the bottom edge of
the Top Fairing.



Cutout in the upper fairing for the Front Strut Stiffener 8F8-1A (riveted to the bottom of the wing at rib station 2)

left side – viewed from the front



Install the upper O/B strut fairing, trimmed flush with the Top Fairing

Short piece of L angle between the O/B fairing and the top fairing.



**LOWER ATTACHMENT
ANGLES
WSF-3**

Looking forward

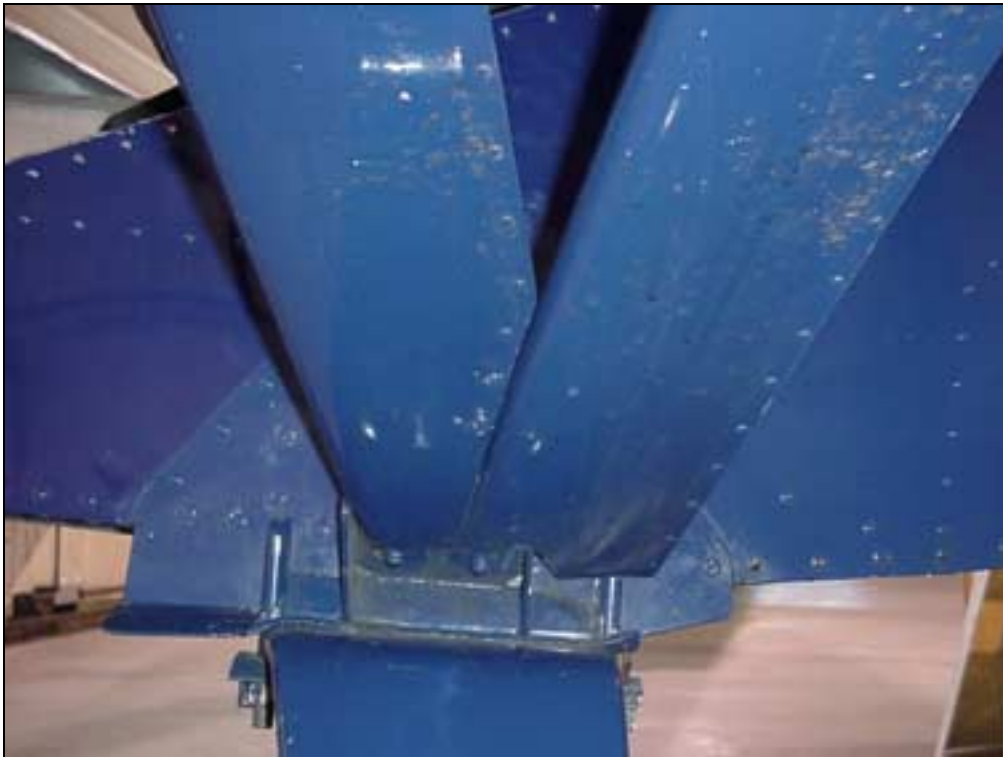


looking back – left side.



Detail of bottom I/B end of front Fairing.

Looking down



Cut the trailing edge of the bottom I/B fairing to make room for the leading edge of the rear strut (bottom).

left side looking up



AN470-A-3-3

PITCH 40

Trailing edge



The squeezed size is half the diameter of the rivet.

If necessary along the trailing edge (with a body file) to bring the top and bottom edge even.

Soft solid rivets