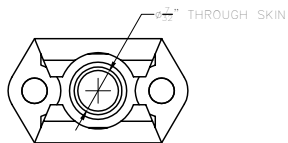
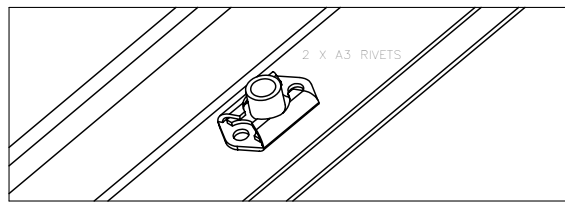
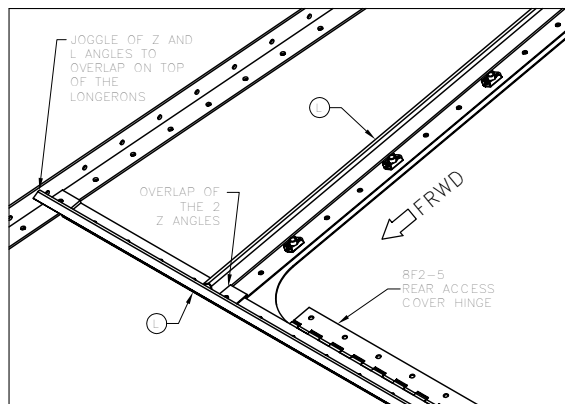
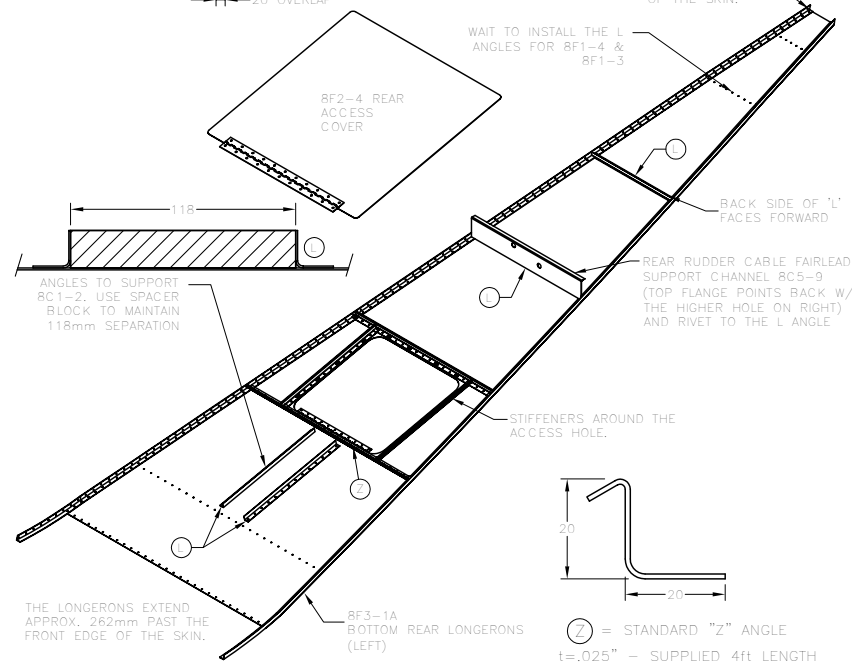


BUILDING SEQUENCE

- OVERLAP 8F2-3A ON TOP OF 8F2-3B BY ALIGNING CENTER LINES.
- WITH THE SKIN UPSIDE DOWN LOCATE THE Z & L ANGLES, MARK THE EDGE OF THE SKIN, TRIM TO LENGTH.
- DRILL THE REAR SEAT FORWARD CHANNEL 8F11-7
- CLAMP THE LONGERON FLUSH WITH THE END OF THE SKIN 8F2-3B, CHECK THE OVERHAND AT THE FRONT.
- INSTALL PIANO HINGE AND ACCESS COVER
- DRILL THE HOLES FOR THE NUT PLATES THROUGH THE ACCESS COVER.
- LOCATE THE NUTPLATES WITH TWO #40 HOLE. RIVET Z ANGLES, NUPLATES AND PIANO HINGE. ADD SCREWS.
- DRILL 8C5-9 ON FIRST L ANGLE BEHIND THE ACCESS HOLE.
- DO NOT RIVET LONGERONS



NUTPLATE MS21075L3 FOR SCREW AN525-10R7 AND 2X A3 RIVETS, QUANTITY=12. CENTER THE NUTPLATE OVER THE PILOT HOLES IN THE SKIN AND DRILL THE TWO OUTER #40 HOLES.



STOL CH 801	ORIGINAL INFO MJM 03/07/01 REVISION INFO MJM 03/20/02	DESCRIPTION REAR FUSELAGE ASSEMBLY: BOTTOM SKIN	ASSY NO. 8FR-2
	COPYRIGHT © 2002 ZENITH AIRCRAFT CO. WWW.ZENITHAIR.COM		