

STOL CH 801 FUSELAGE CABIN ASSEMBLY

SECTION 8 Gear/Strut Fitting



Note: the "step" in front of the gear is no longer welded on the gear strut fitting.

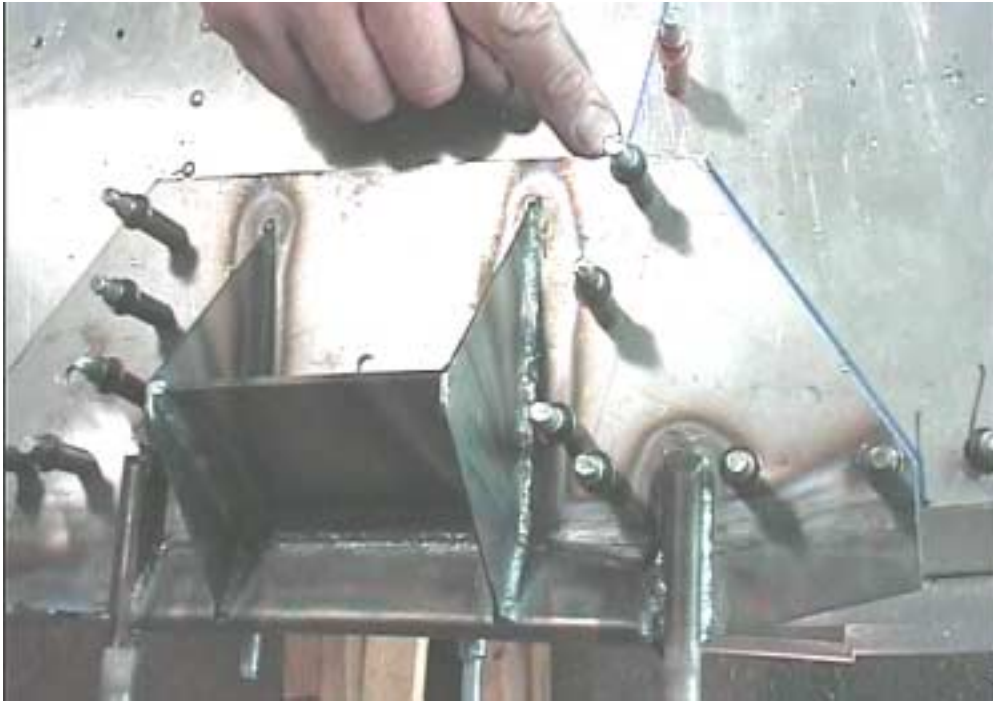


**GEAR/STRUT FITTING
8F17-1**

Photo of right O/B side



The flange on the I/B side fits underneath the cabin frame.



The bend lines up with the bend in the cabin side assembly.

Position the bracket such that the slight bend in its side plate is at the corresponding bend in the cabin side (where it meets the skin rear side). Have an assistant press the bracket as tightly to the fuselage as possible while drilling from the inside. First drill pilot holes.

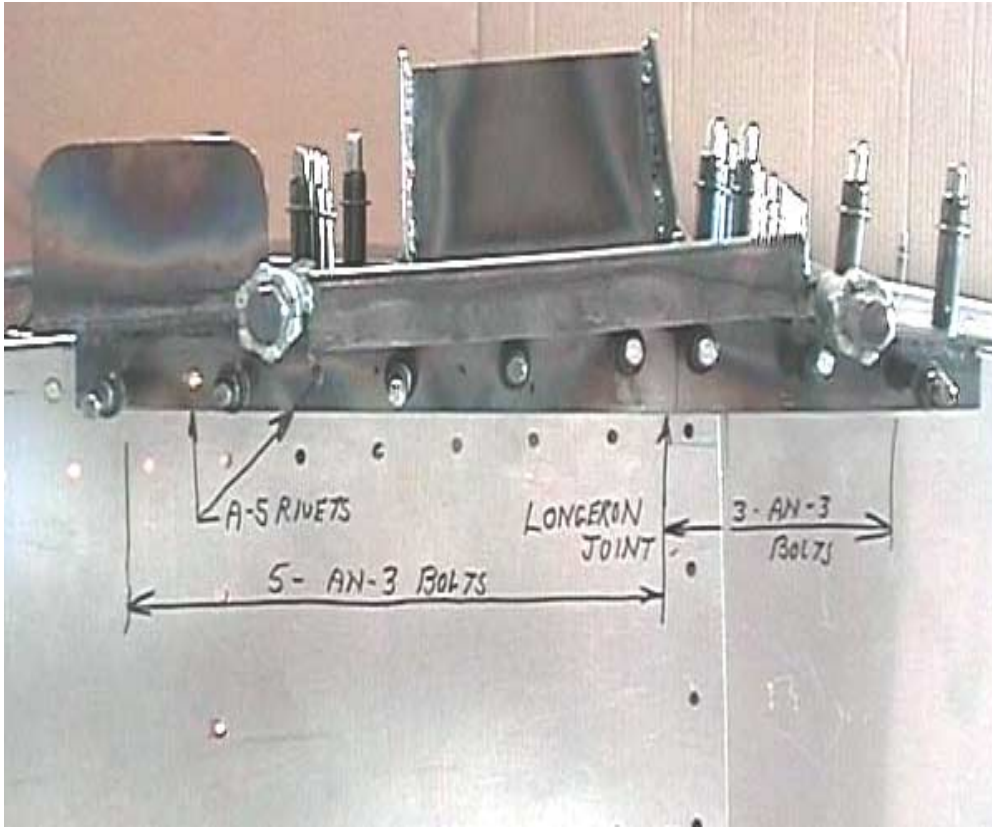


12 BOLTS AN3-5A

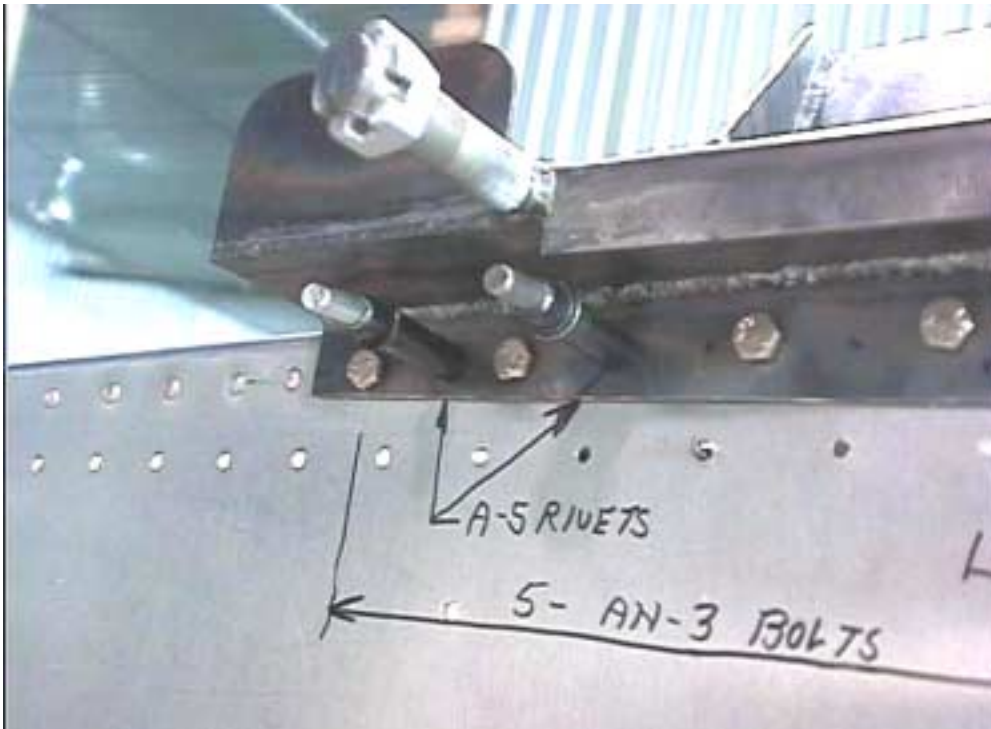
3 IN 8F5-4
 3 IN 8F3-1A
 3 in vertical extrusion in cabin side
 4 in corner angle in cabin side.

Note: The part is no longer made with the step at the front.

Forwards is to the left of photo



This view from the under side of the fuselage shows all the holes which will be opened to 3/16 diameter to accept AN3-5A bolts with 2 washers. (Those with a cleco in the main gear attachment bracket flange)
Forward position (nose) of the aircraft is on the left side of this photo.



There are two A5 rivet holes on the flange, drill these from the inside of the fuselage.



With the bolt holes identified now drill the holes for the A5 rivets in the side plate of part. Drill a total of eleven holes, their location indicated by the clecos. It is best to drill these holes from outside of the aircraft. Watch for clearance of structural members inside the fuselage.