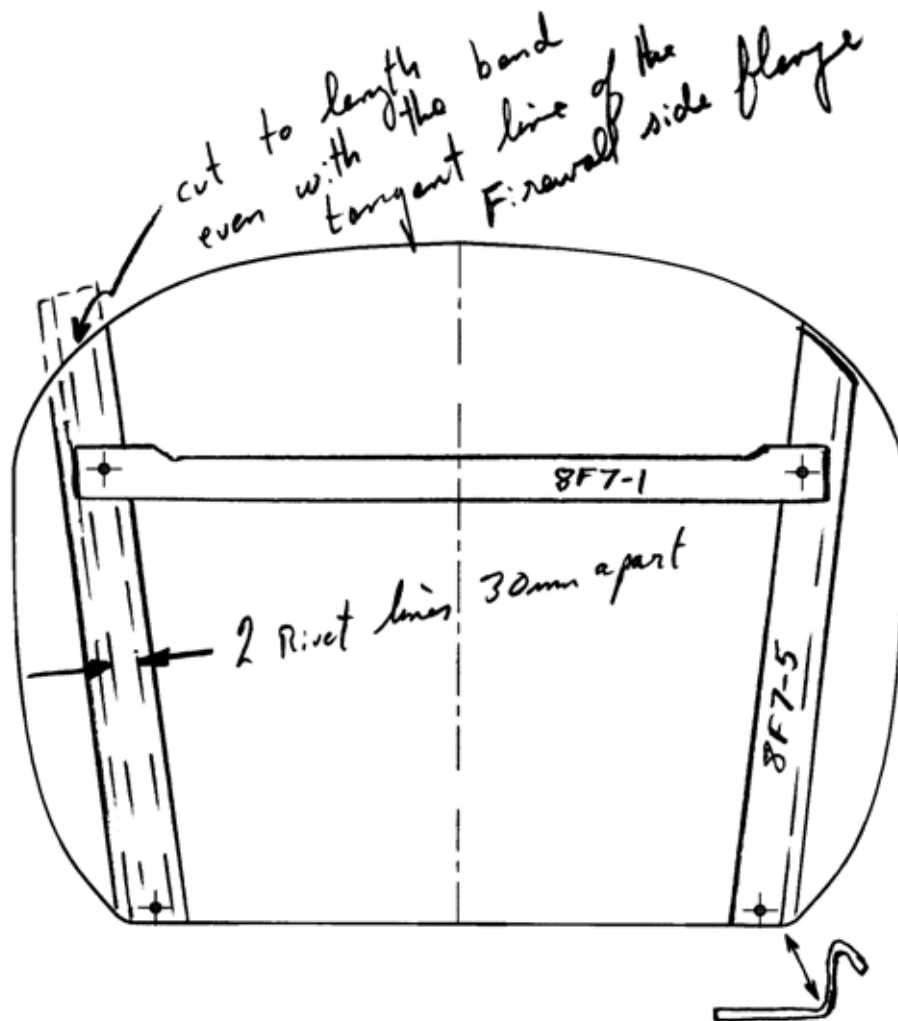


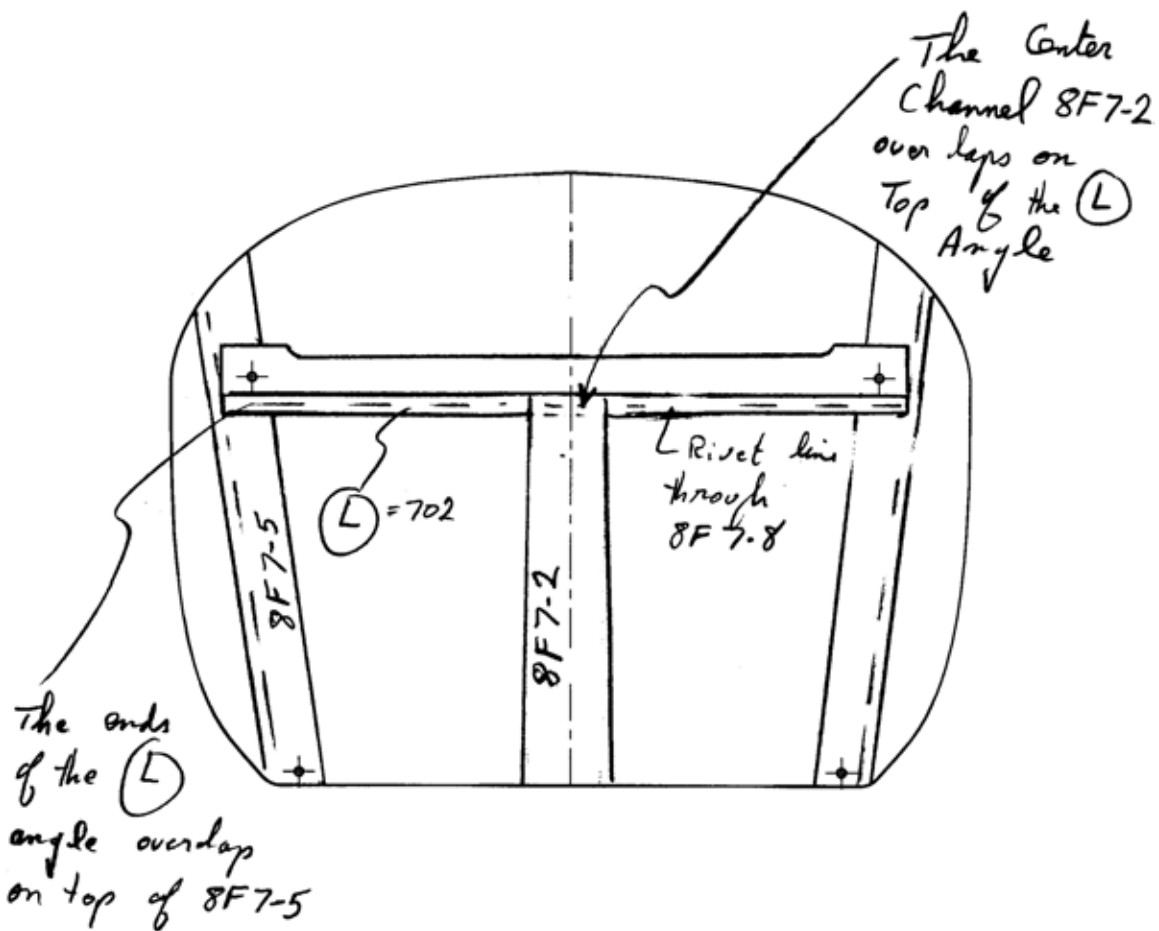
Angles on the front side of the firewall (engine side)



POSITION: TOP - 8F7-5 fits underneath 8F7-1
 The bottom corner of the flange on 8F7-1 stops at the bend tangent line of 8F7-5

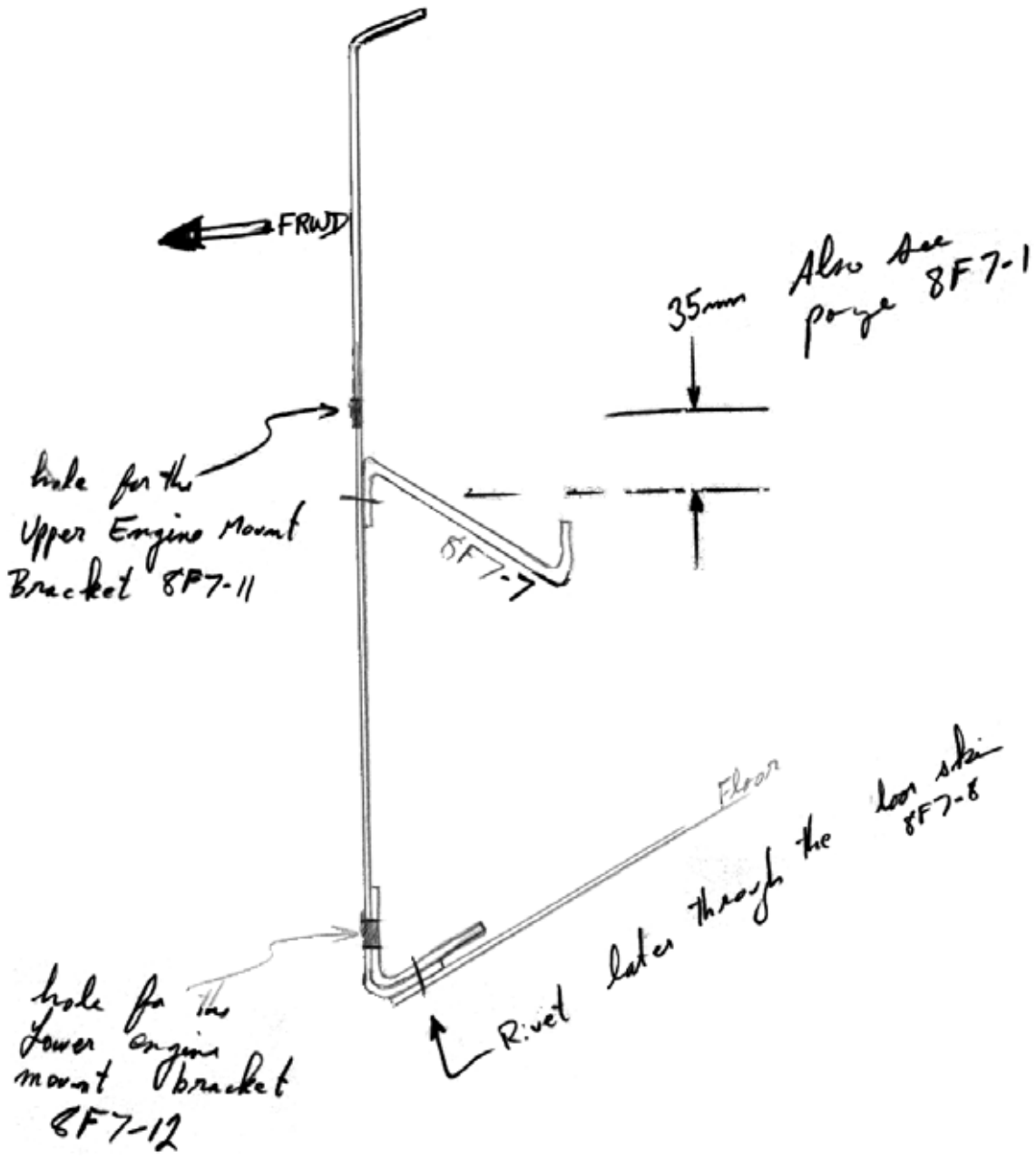
Bottom: centered on the hole for the Bottom Engine Mount fitting

Angles on the front side of the firewall (engine side)

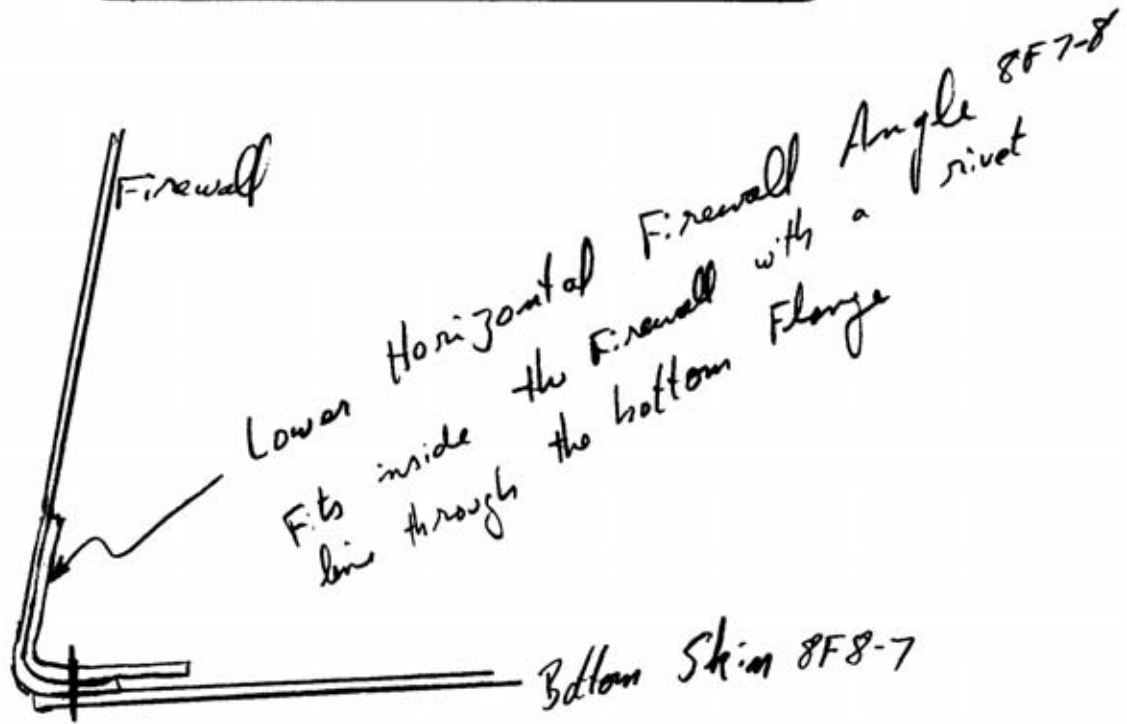
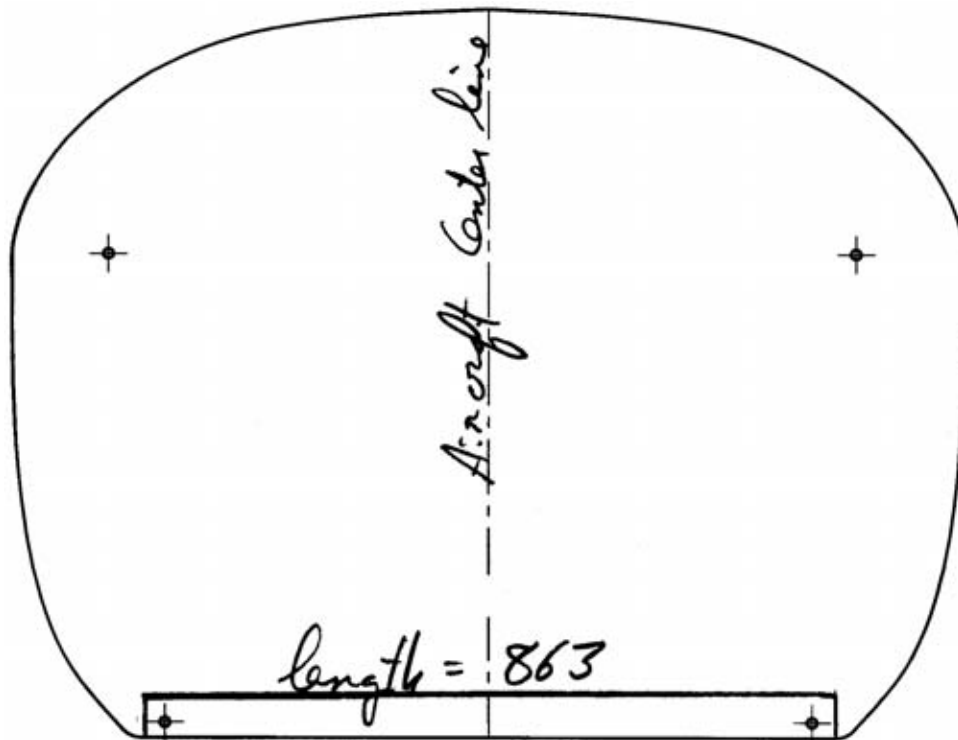


(L) Angle is the same length as 8F7-1 length = 702

Angles on the front side of the firewall (engine side)

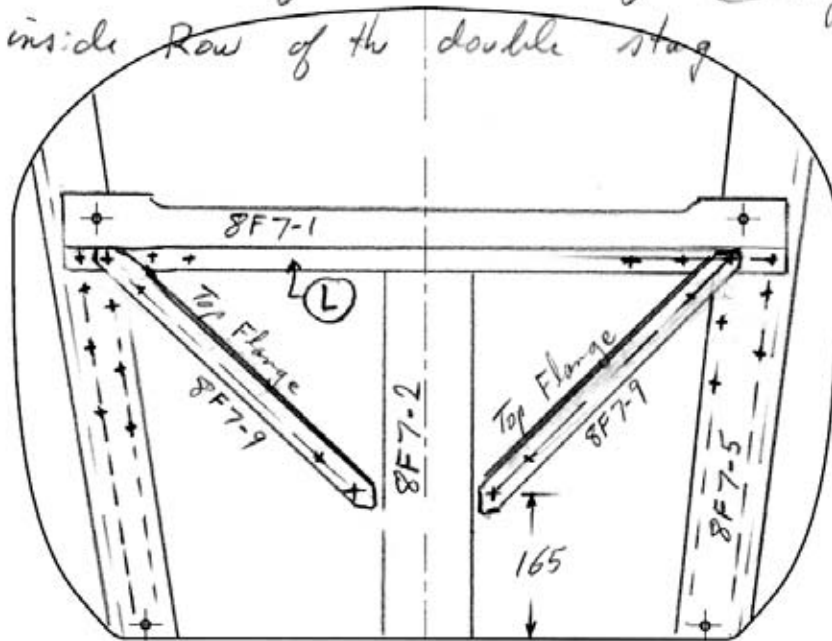


Angles on the front side of the firewall (engine side)

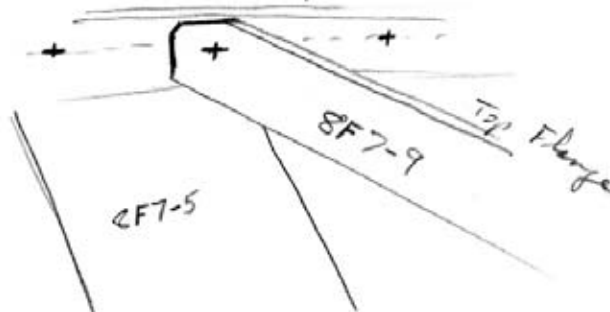


Angles on the front side of the firewall (engine side)

At the Top, 8F7-9 overlaps on top of the (L) angle Flange. The Rivet at the Top is on the intersection of the Rivet line of the (L) angle and the inside Row of the double stag



- The Top flange of the diagonal Stiffener 8F7-9 has a tapered cut at each end
- The flange that Rivets to the Firewall is shaped to clear the (L) angle and the Channel 8F7-2



Angles on the front side of the firewall (engine side)