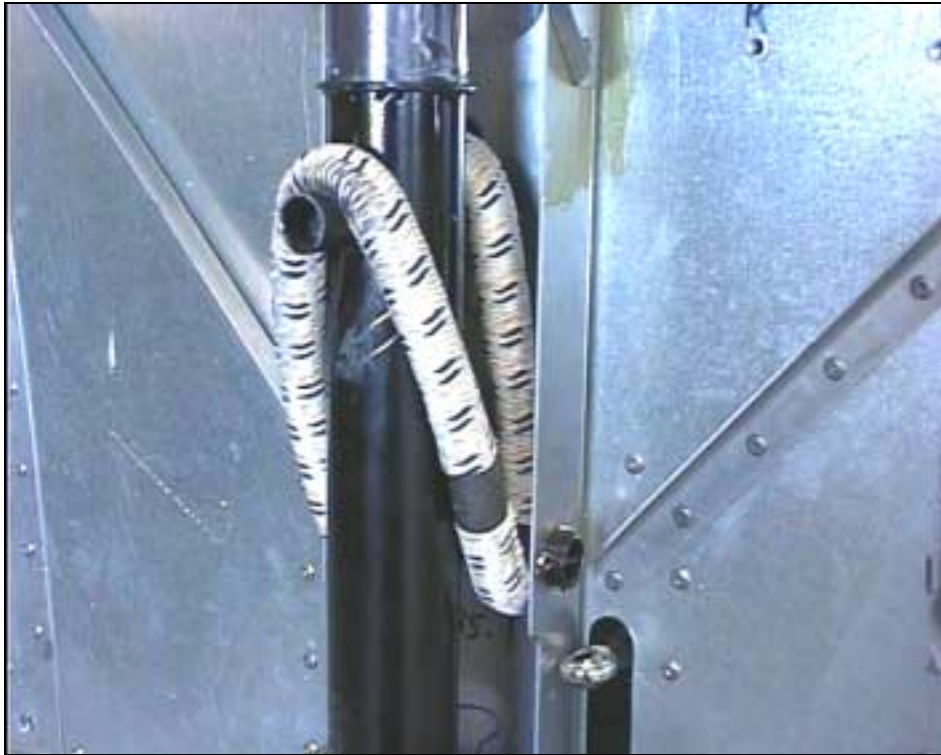


STOL CH 801 FINAL ASSEMBLY

SECTION 2

“NOSE GEAR BUNGEE”





Complete the bungee installation.



The nose wheel fork and axle are the next items to be installed.



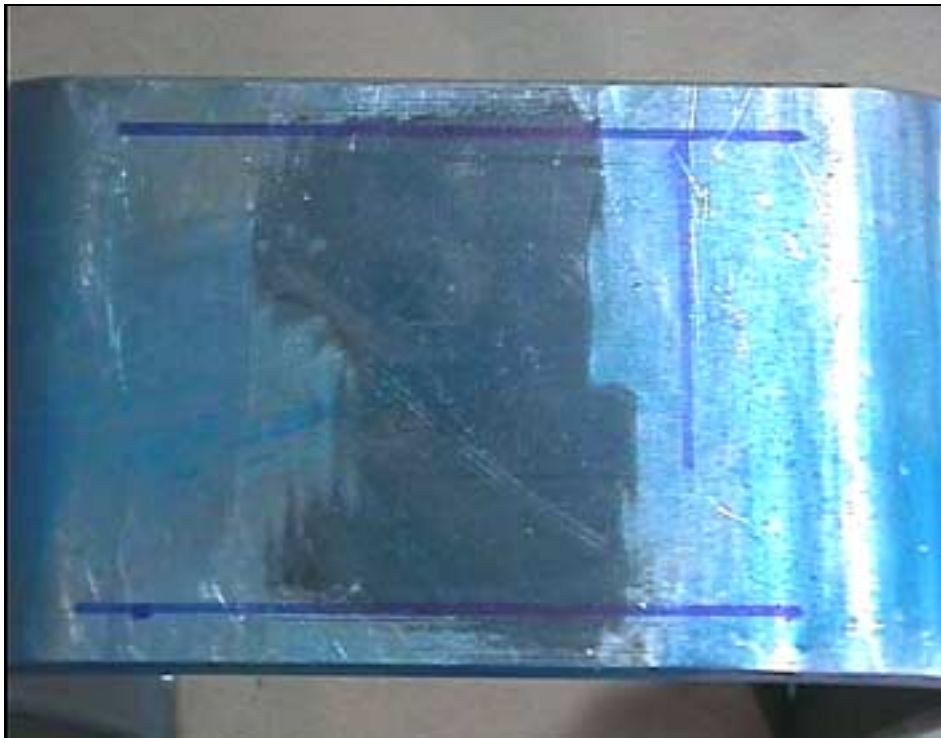
Note: 8L1-3A is only used with the Cleveland nose wheel.

Part number correction:
8L1-6 replaces 8L1-3C
(3/4" spacers)



Orientation: The uncut side is towards the rear.

The nose wheel fork 8L2-4. It is installed with the tapered edge towards the front of the aircraft.



Layout the position of the nose gear strut attachment pad centered on the nose fork. This will provide the approximate location reference line.



Install a 3-foot length of straight 5/8" diameter rod or tube in the axle bolt holes, center it and secure it in place with masking tape.

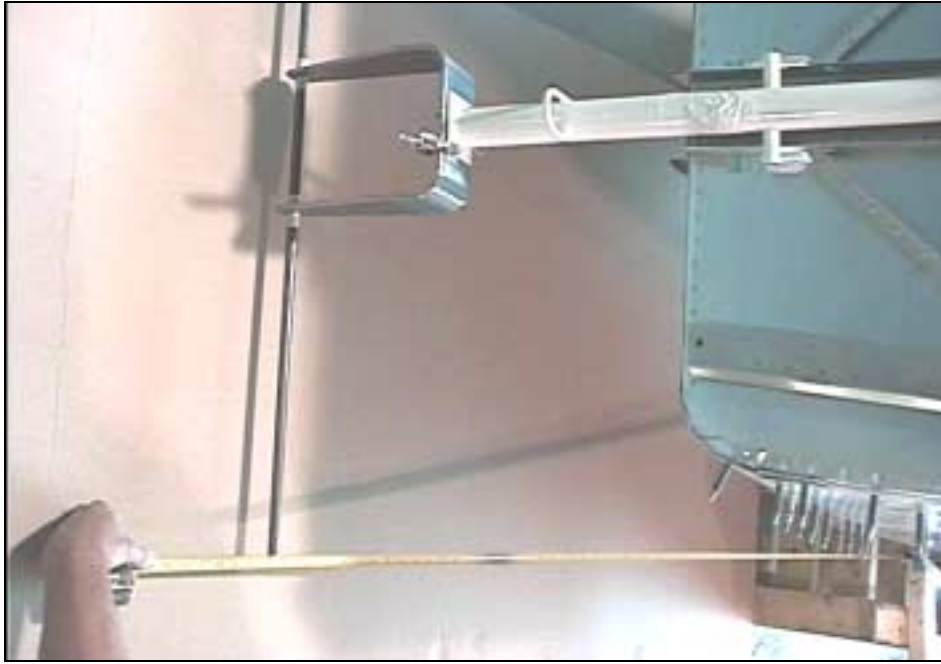


Gear strut 8L1-1

Wheel fork 8L2-4

AN4-7A qty=8

Clamp the nose fork to the flange on the lower end of the nose gear strut. Measure either side, front to back of both parts to ensure centering and at the same time keep the 3-foot rod at right angles to the longitudinal centerline of the fuselage.
(just eyeball it for now)



When the positioning of these parts looks to be correct, measure from the forward bolt of the main gear support brackets to the end of the 5/8 rod on one side of the aircraft then the other. If the nose wheel fork is properly positioned the dimensions should be identical.



Transfer the holes from the nose strut flange to the axle. Drill these holes to 1.4" diameter and bolt the fork in place.



Note: optional tow bar plate along the front of the wheel fork.



tire



Line up the red triangle with the stem of the inner tube

With the tire mounted on the wheel and the bearing lubricated, mount the wheel in the fork using the axle # 8L1-3B, spacers # 8L1-6. Tighten the castle nuts until the wheel rotates freely without any play. Drill a hole in the axle for the cotter pins.



Install the steering rods.



P/N CW-5-12

The hole in the rod end is a witness hole to allow determination of how far the item is threaded into the end. The hole must be blocked by the threaded item otherwise an unsafe condition exists.



Install the rod end. With the nose wheel in its neutral position adjust the rod ends until the left and right rudder pedals are even with one another. Bolt the ends in place.