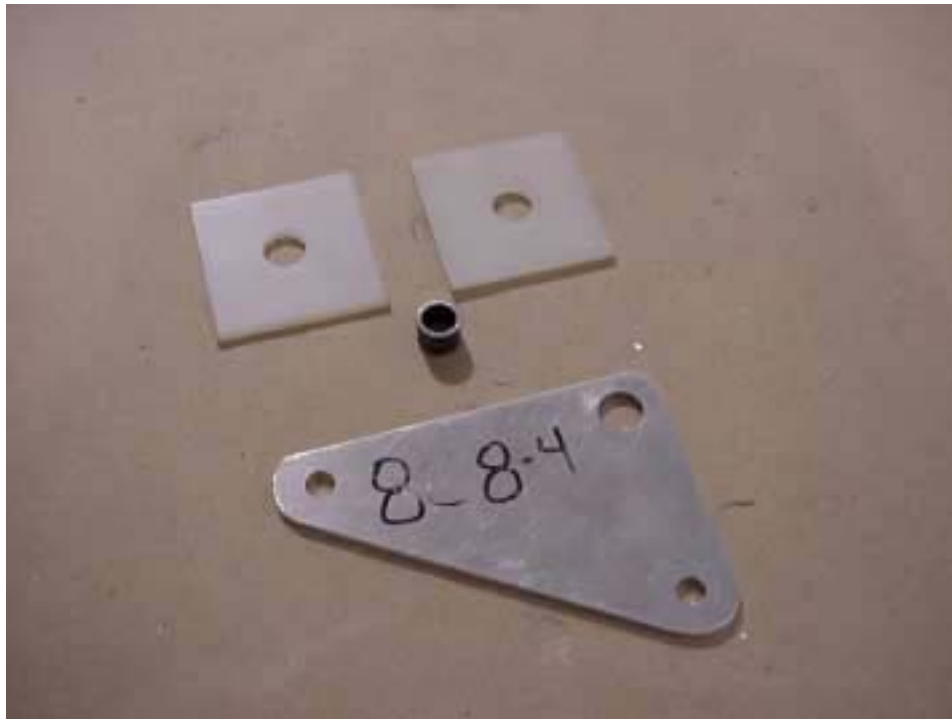


STOL CH 801 CONTROLS

SECTION 4 Horizontal Control Rods Ref Dwg 8CF-4



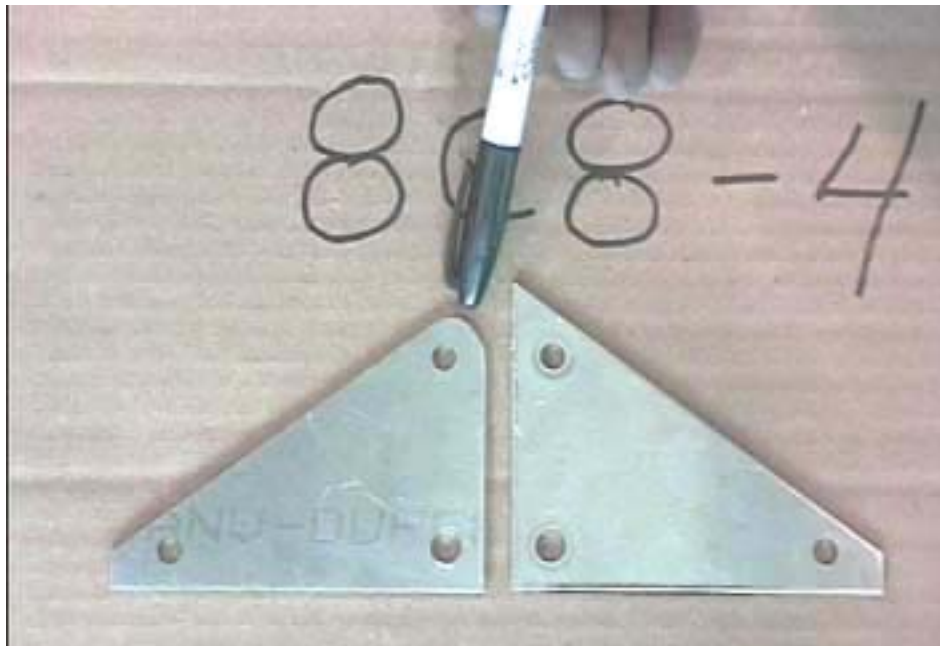
Rear seat back and seat bottom removed. Photo taken from the rear fuselage access hole looking forwards at the Horizontal Control Rods 8C9-1



**FLAPERON BELLCRANK
8C8-4**

**FLAPERON BELLCRANK
BEARING
8C8-8**

**FLAPERON BELLCRANK
BUSHING
8C8-9**



Ref. DWG 8CF-4

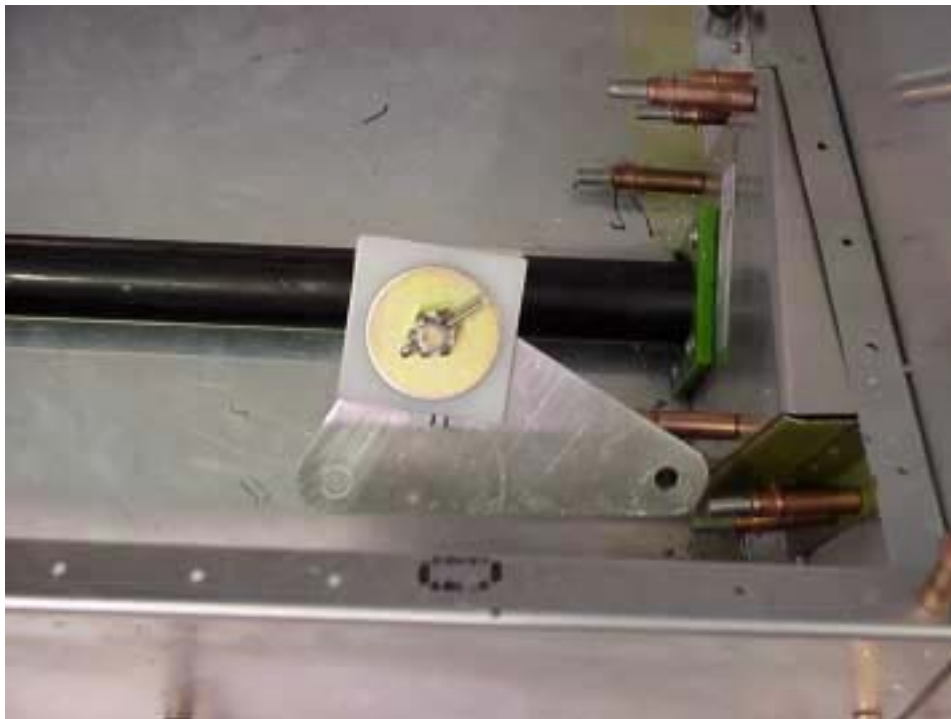
Open up the pilot holes,
two 5/16" holes, the
middle hole 1/2" for the
bushing 8C8-9

Radius the corners R12
(from the center of the
5/16" hole to the outside
edge of the Bellcrank).



Insert the bushing and a 1/8" Bearing on each side of the Bellcrank.

CHECK: The bushing turns freely in the 1/2" hole



CASTLE NUT
AN310-6

PENNEY WASHER
AN970-6

3/32" COTTER PIN
AN380-3-3

NOTE: The nut and washer keep the bushing from turning: the bearing surface is between the outside of the bushing and the Bellcrank.

Detail of left side



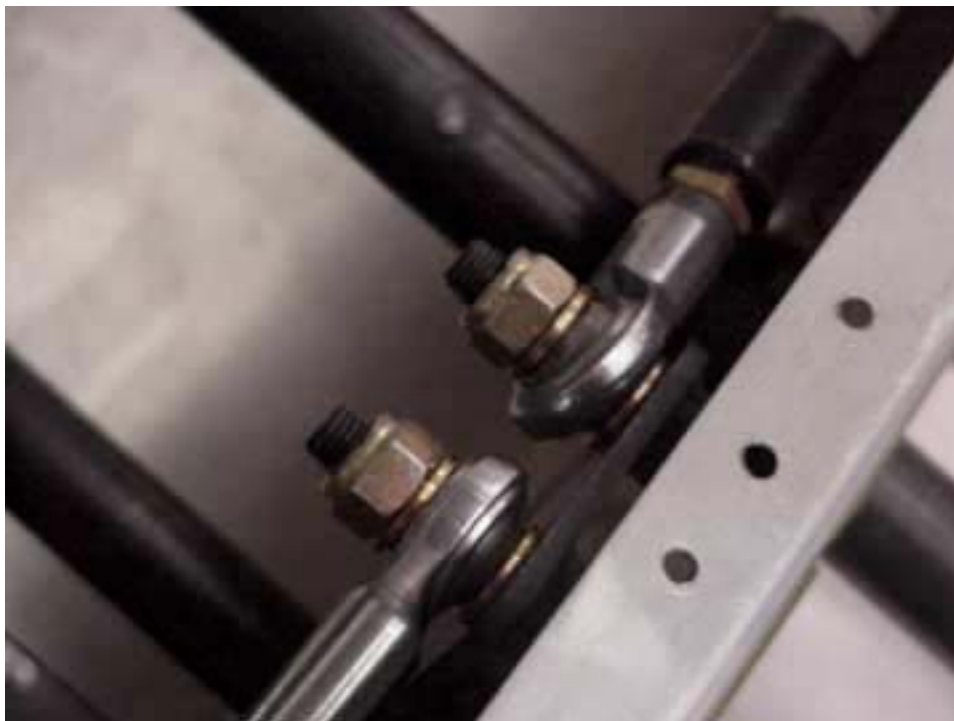
**FLAPERON
HORIZONTAL CONTROL
ROD 8C9-1**

**JAM NUT
AN316-5R**

**ROD END
CW-5-12**

CHECK: The threaded rod should be visible in the inspection hole drilled in the side of the Rod end.

Screw the Jam nut and rod end to the end of the Control rod. Set the distance between the bolt center of the rod end, see top left diagram on drawing 8CF-4



The rod end not welded to the rod 8C9-1 is bolted to the Rear Torque tube 8C8-3

Find the best alignment of the rod end, and then tighten the Jam nut against the rod end.

One washer on each side of the rod end.



**AIRFRAME BOLT
AN5-10A WITH SL NUT**

Bolt the O/B end of the rod on the front side of the Bellcrank.

Detail of right side, the long leg of the Bellcrank is towards the top pointing O/B



Rods connect the Bellcrank to the Rear torque tube.

Detail of right side.