

---

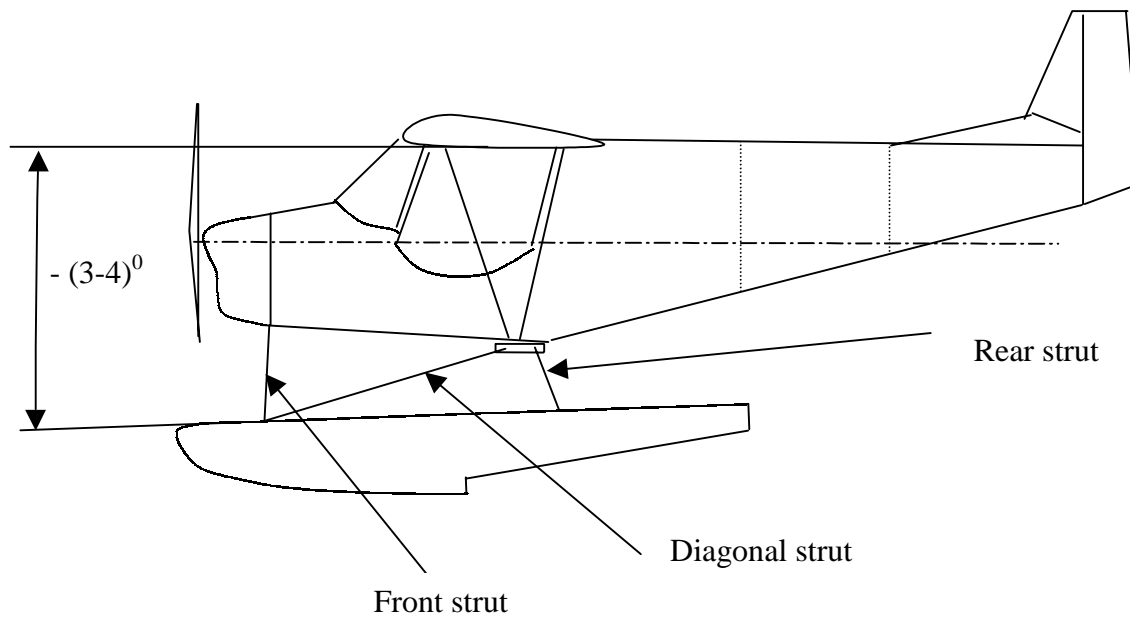
## Float installation

Dear customer

You received installation set and installation instructions

Basic dimensions:

- The angle between float top and the upper cabin frame is  $3-4^{\circ}$ . Aircraft nose is up, when the top of float is horizontally.
- The distance between float centers is 1950mm.



## Float installation

### 1 Float installation

- Pick up the airplane
- Dismount main gear, front gear
- Install floats use spreader bars and struts. On upper mount attach insert 1/8 washer. The upper front struts end is attached under lower engine mount.
- Replace the steering rods with springs attached to pedals so that the same tension is maintained on the rudder cable.
- Install wire bracing between floats
- Install rear and front wire bracing

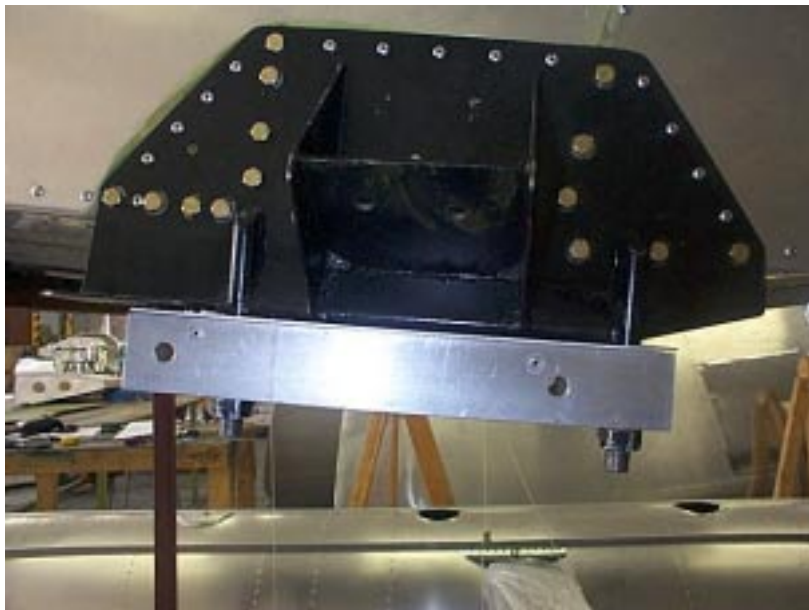
### 2 Water rudder control cable and water rudder lift and down cable installation.

See drawings and photo.

---



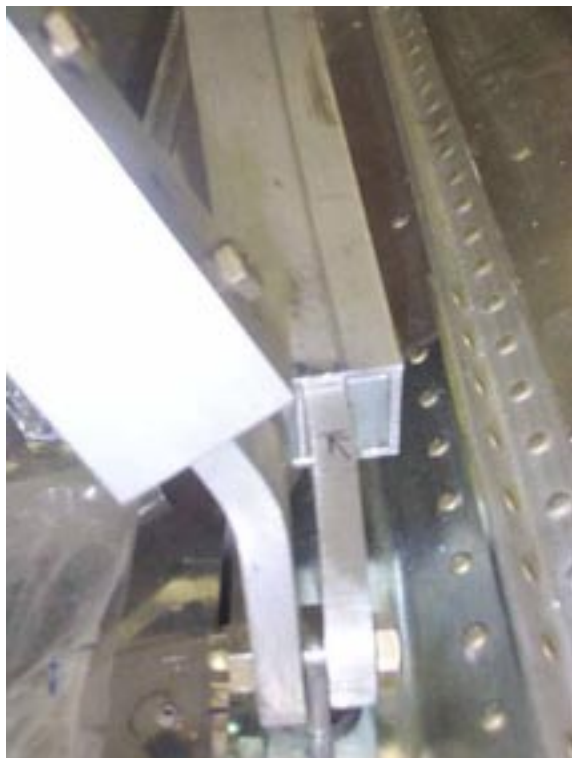
*Float installation*



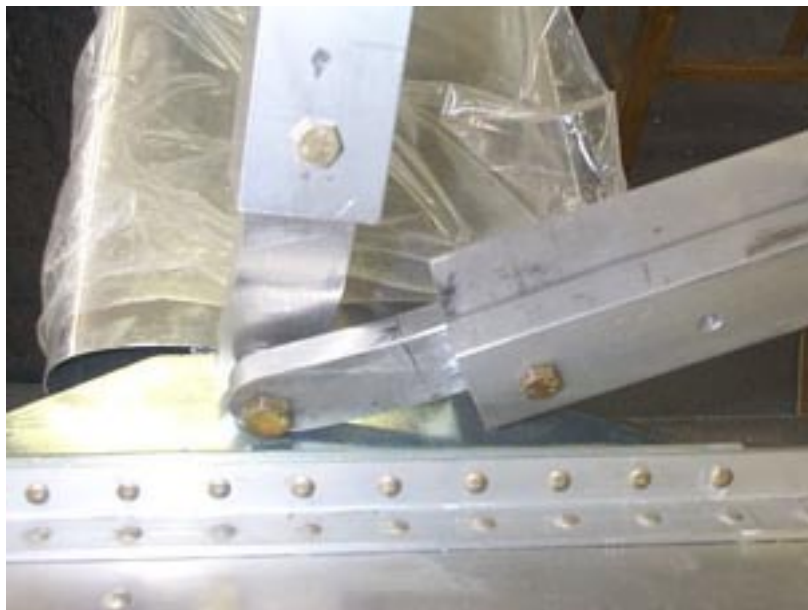
*Install gear fittings and spacers to clear the weld*



*Strut installation*



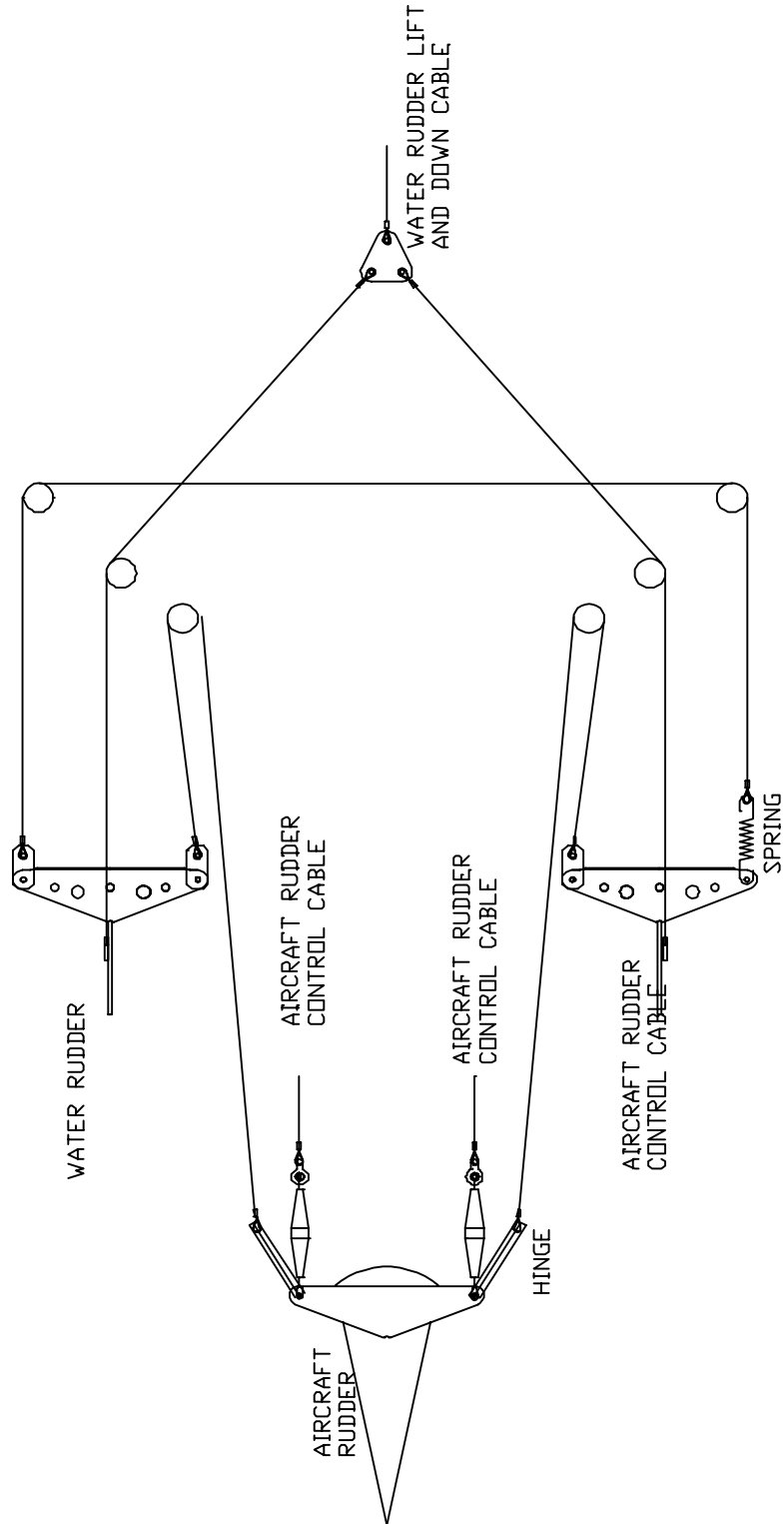
*Front and diagonal strut connection*



*Front and diagonal strut connection*

---

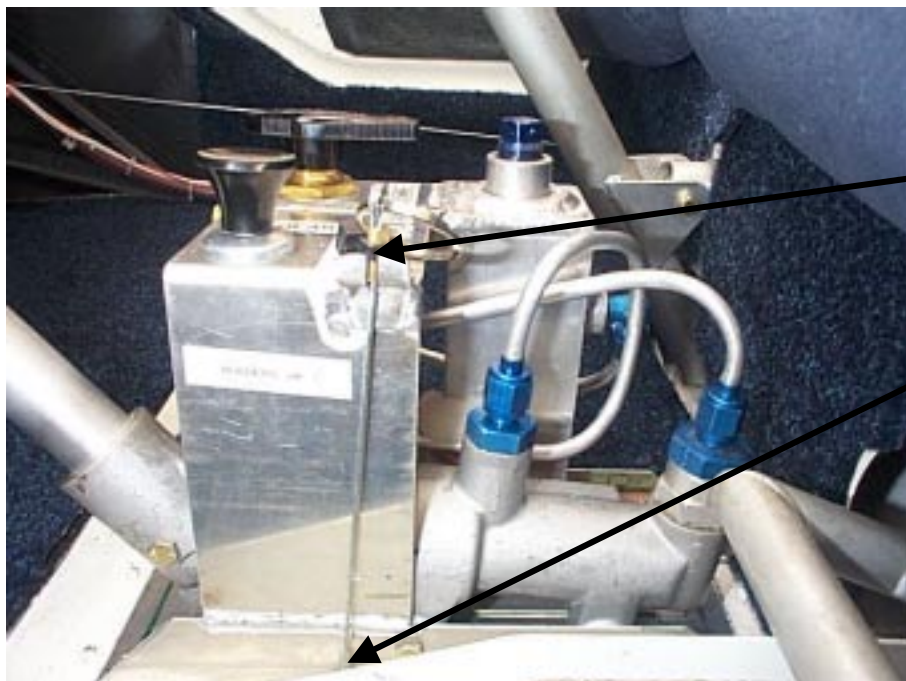
Water rudder cable and water rudder lift and down cable





Water rudder lift and down cable installation:

- Install lift and down cable support to cabin
- Drill hole (dia. 6mm) for flexible cable bolt trough cabin floor.
- Install bracket for lift and down cable close to aircraft center line (2\*AN 3-5A bolt)
- Connect lift and down cable to water rudders
- Connect both cables using cable connector
- Run flexible cable from bracket to bolt for flexible cable
- Run the lift and down cable from cable connector to cabin
- Make loop



For inspiration

Loop

Bolt for flexible cable