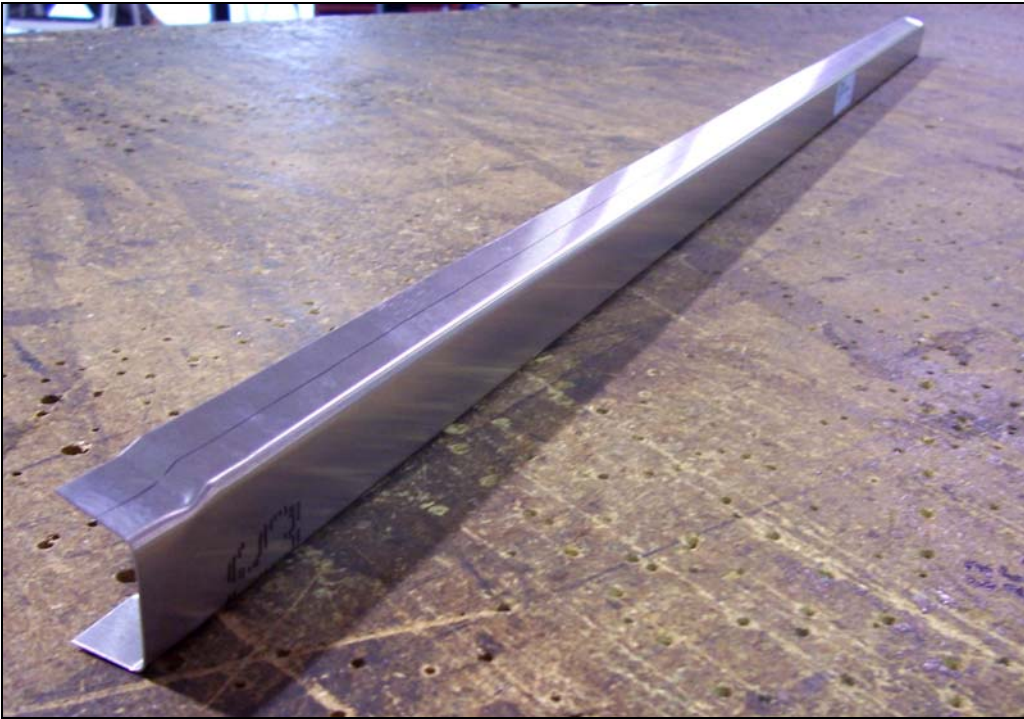


75-TA-5
Elevator Trim Tab

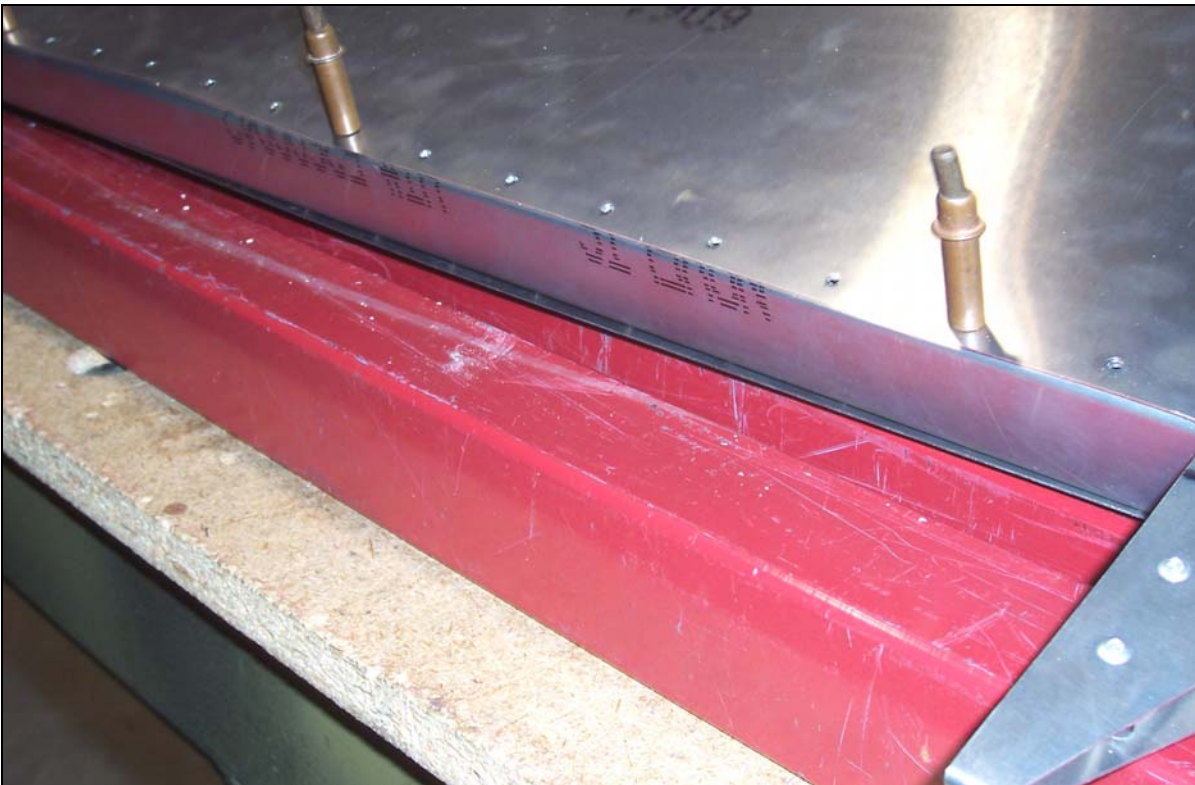


This manual has been prepared for assembly of the Elevator Trim Tab. This photo assembly manual is intended as a supplement to the drawings. If there is any discrepancy between this manual and the drawings, the drawings supersede this manual. For information on building standards and tolerances see "Construction Standards for Zenair Light Aircraft" available from Zenith Aircraft Co.

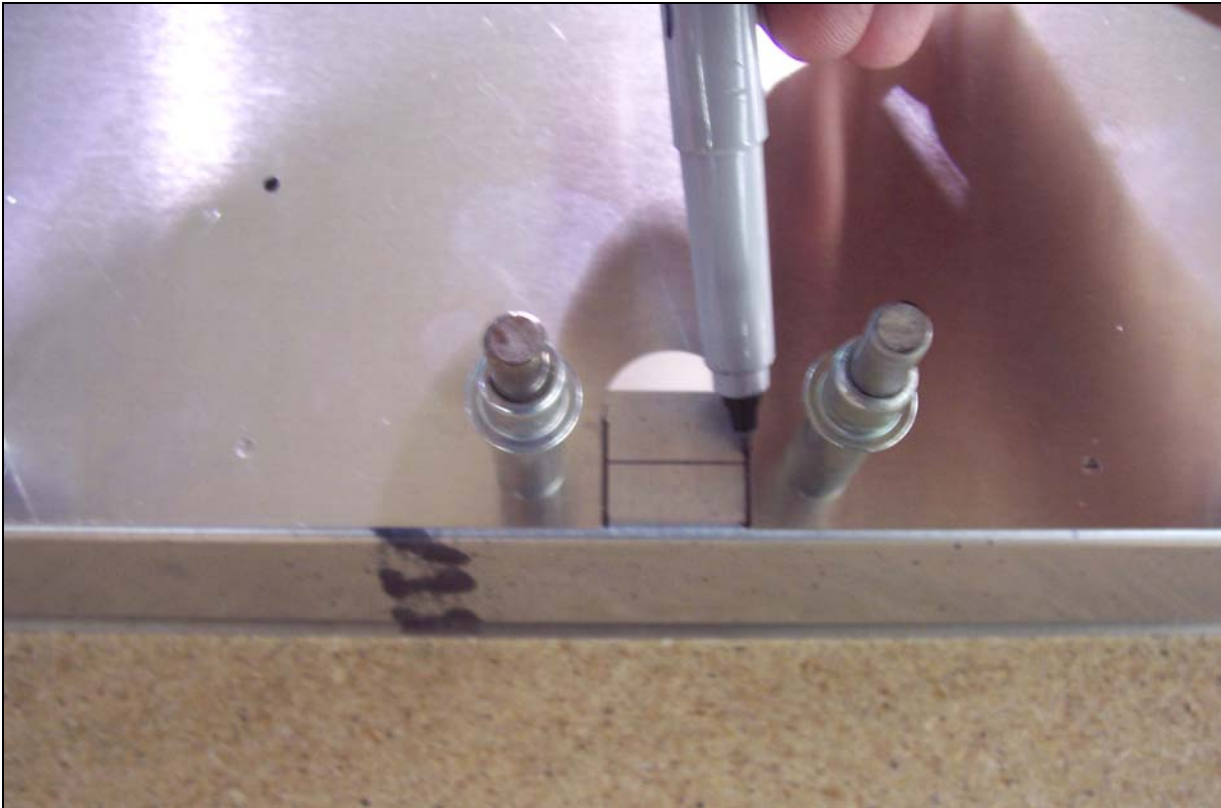


P/N: 75T4-5
Elevator Trim
Tab Channel

Draw a center line on the top and bottom flanges of the Trim Tab Channel. The top flange is bent 90 degrees to the web.



Slide the Trim Tab Channel inside the Left Rear Skin. The joggles on the Trim Tab Channel fit inside the Inboard Rear Rib and the Tip Rib flanges. When the center line is visible through the pre-drilled holes in the Rear Skin, drill with a #40 drill bit and Cleco the Trim Tab Channel in place.



Trace the cutout on the bottom of the Elevator Rear Skin onto the Trim Tab Channel.



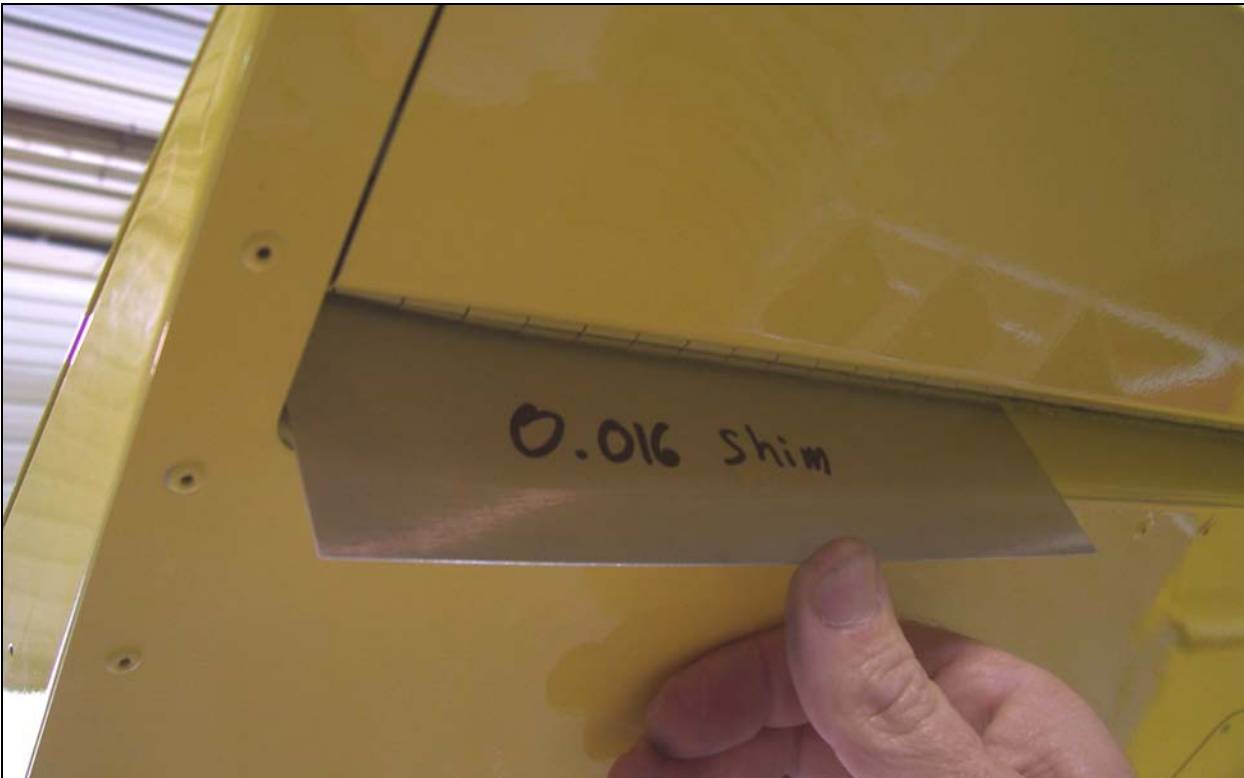
Extend the lines to the web of the trim tab channel 25mm and radius the top of the cutout. Trim the Trim Tab Channel along the lines for the Trim Tab Control Rod.



P/N: 75T4-4
Elevator Trim Tab

P/N: 75T4-6
Elevator Trim Tab
Hinge

Mark a line 8mm from the front edge of the Trim Tab. Measure in 10mm from each edge and mark a rivet. Layout an even rivet pitch, approximately 40mm, on the Trim Tab. Put the Trim Tab Hinge with the barrel down between the flange and skin of the Trim Tab. Drill to A4 and Cleco the Trim Tab Hinge to the Trim Tab.



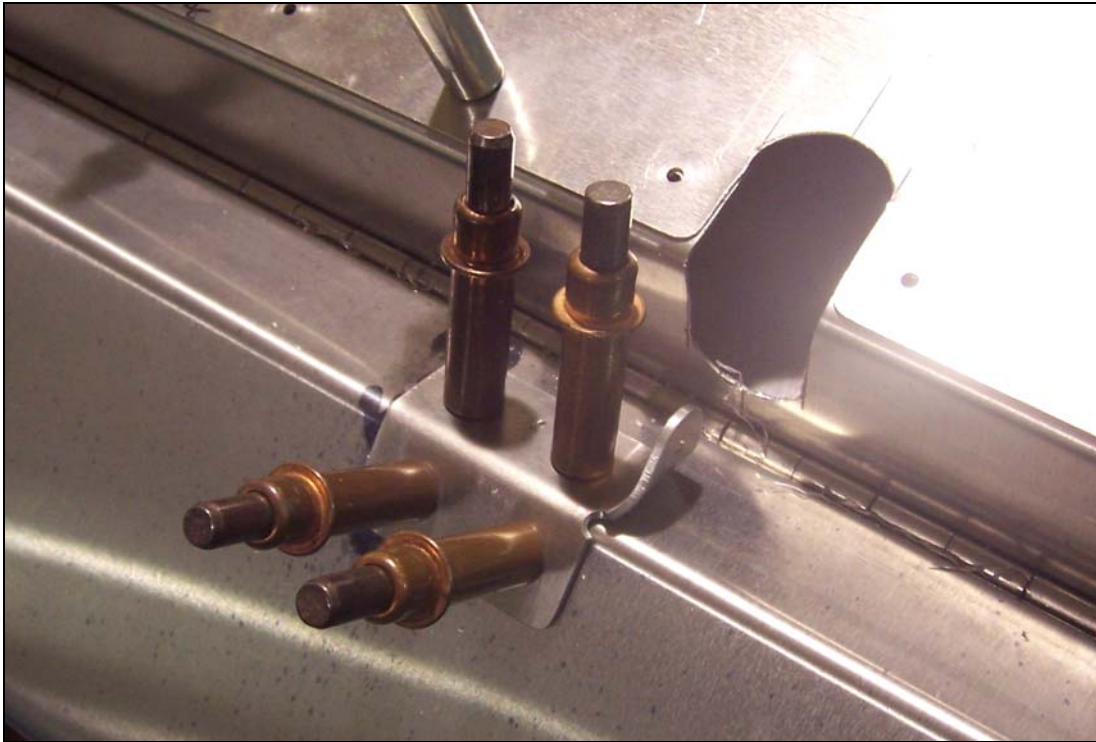
Push the Trim Tab Hinge between the top of the Trim Tab Channel and the Rear Skin. Use a 0.016 inch shim to position the barrel away from the Trim Tab Channel so the Trim Tab Hinge doesn't bind or wear on the Trim Tab Channel.



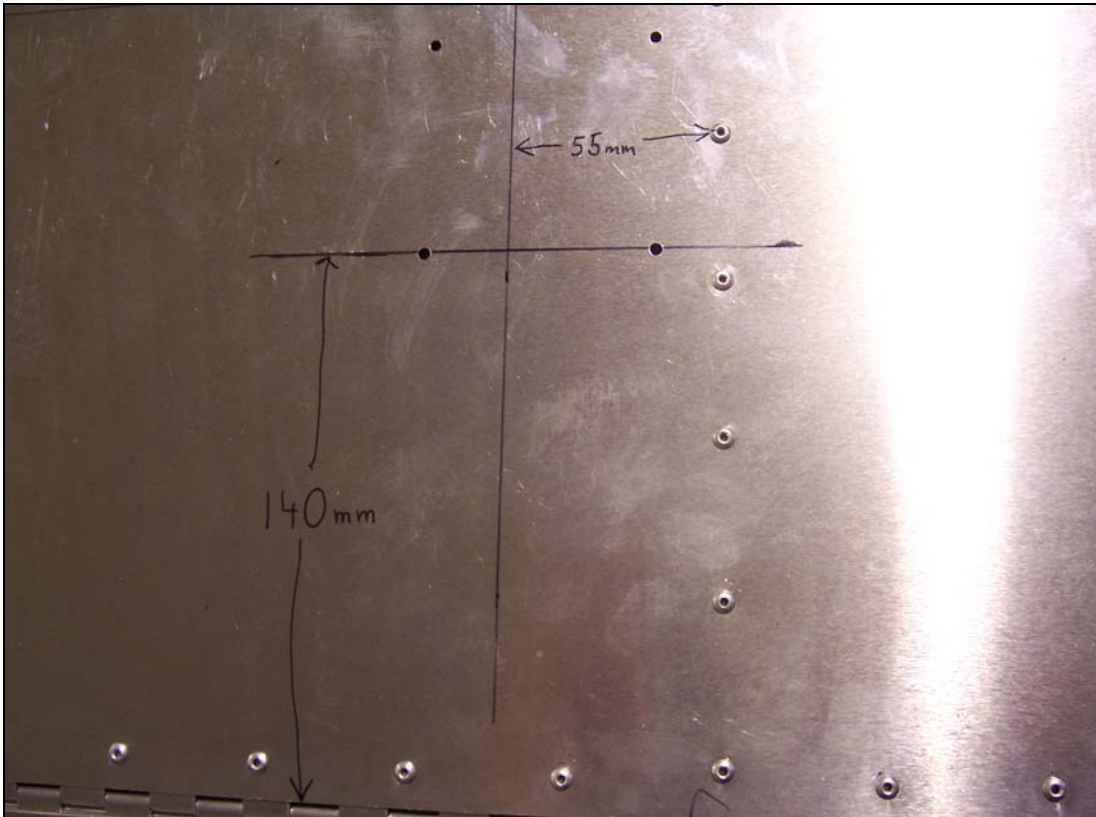
Drill to A4 and Cleco the Trim Tab Hinge to the Rear Skin.



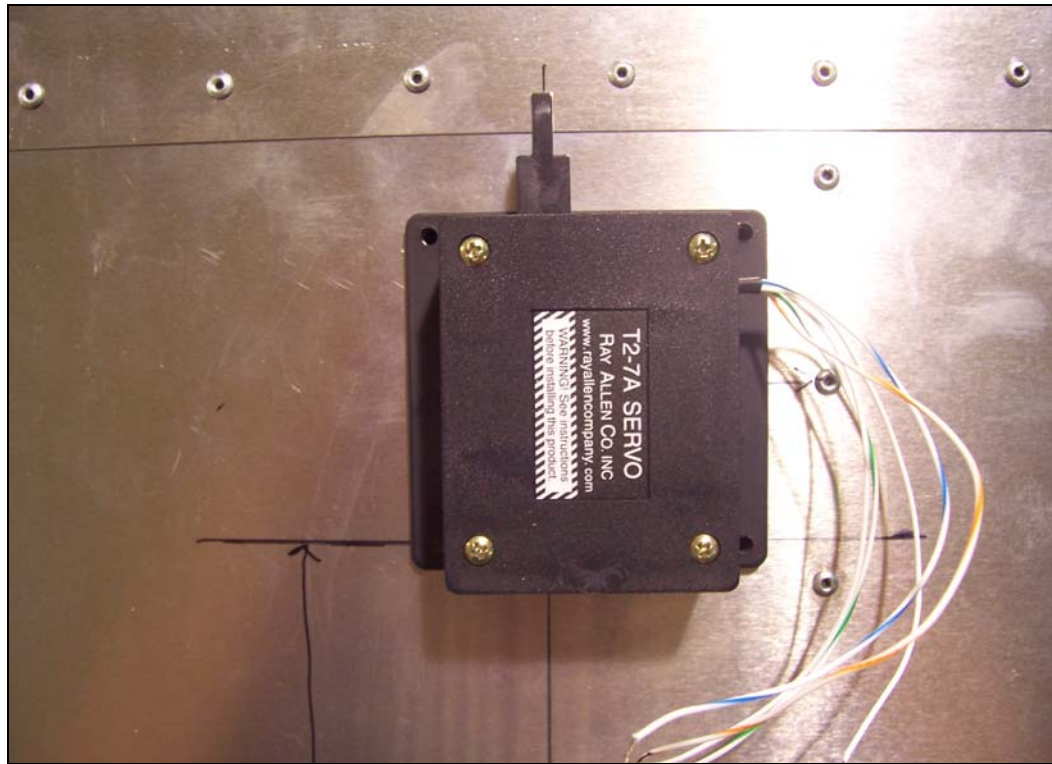
P/N: 75T4-7
Elevator Trim Tab
Horn



Center the Horn on the cutout in the Trim Tab Channel and Rear Skin. Drill to A4 and Cleco the Horn to the Trim Tab.

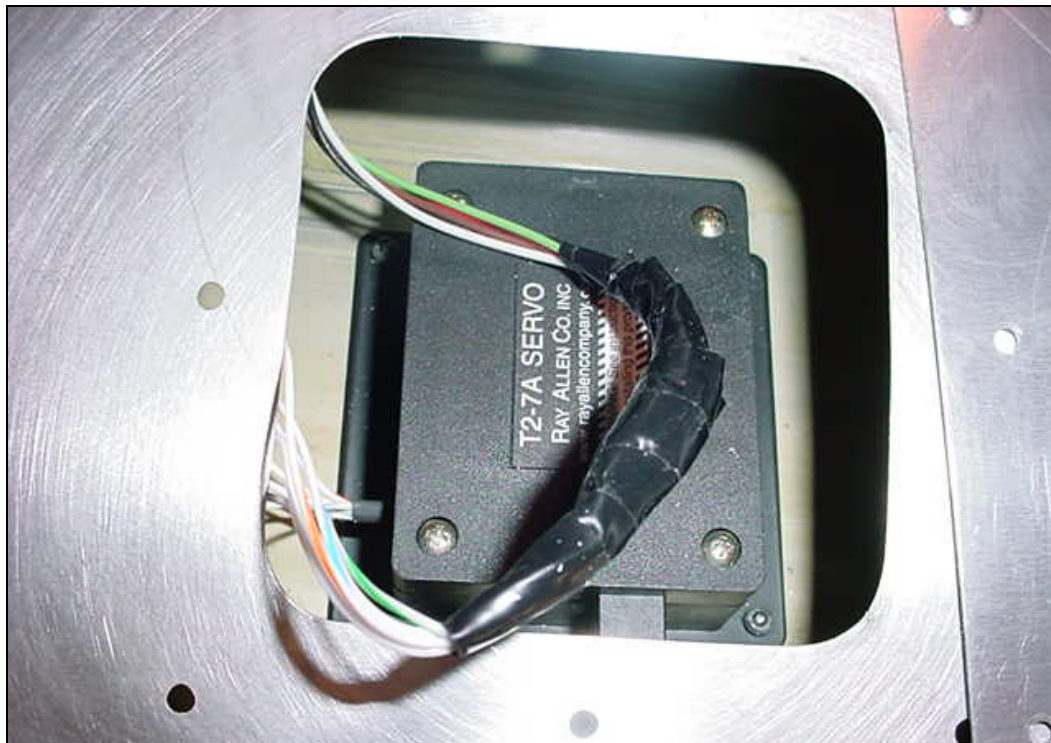


Draw a line 55mm outboard of the Middle Rear Rib rivet line. Draw a line 140mm forward of the trim tab cutout, both on the top of the Rear Skin.

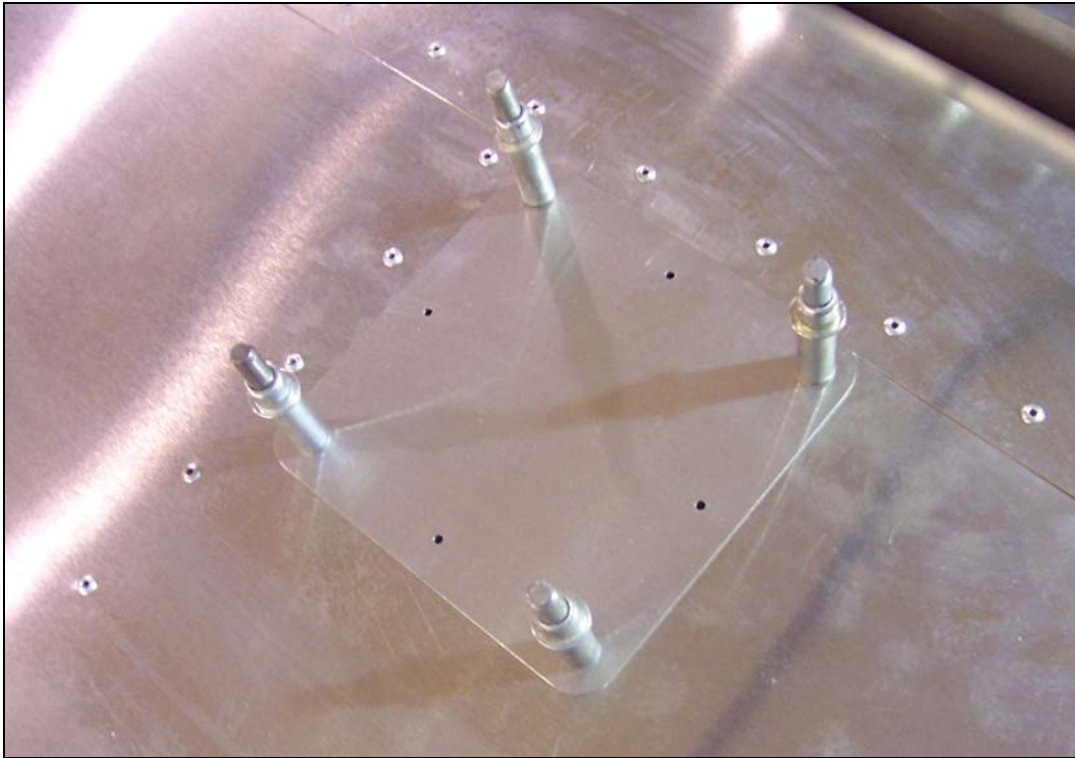


P/N: T2-7A-TS
Trim Servo

Center the Trim Servo Arm on the 55mm line. When the line at 140mm is visible through the holes in the Servo drill to A4.



Cleco the Servo inside the Rear Skin and rivet the Servo to the Rear Skin. Following the wiring diagram on page 75-TA-5, solder the Servo wires to the 5 Wire Electric Cable. Insulate the bare connection with electrical tape or other insulation.



P/N: 75T4-8
Access Hole Cover

Cleco the Access Hole Cover to the Rear Skin. Drill to A4 and Cleco to the Rear Skin.



Trim the Hinge Pin approximately 5mm shorter than the Trim Tab Hinge. Drill a 1/16 inch in the end of the Trim Tab Hinge and safety wire the Trim Tab Hinge so the Hinge Pin won't work out of the Trim Tab Hinge.