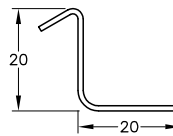


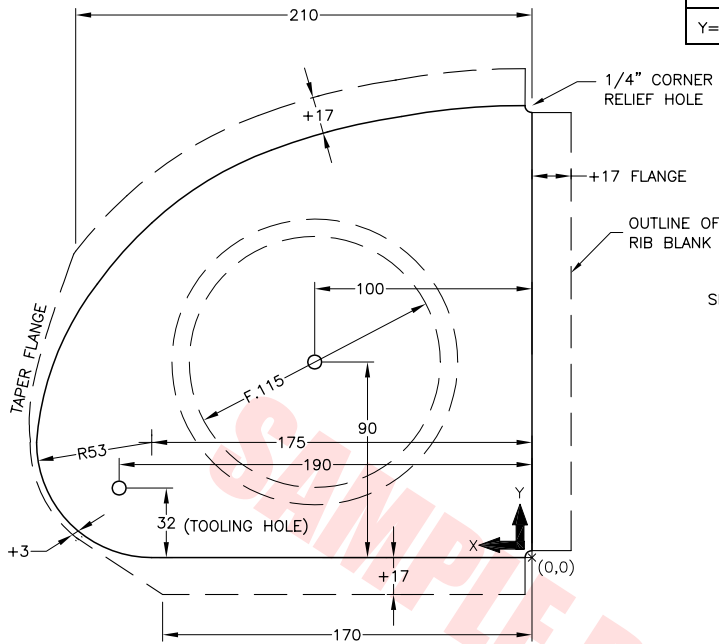
L STANDARD 'L' ANGLE
 $t = .025"$ (38 REQ'D)
 $l = 4'$



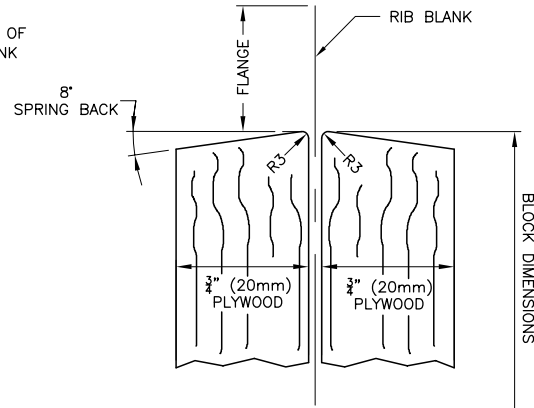
Z STANDARD 'Z' ANGLE
 $t = .025"$ (6 REQ'D)
 $l = 4'$

NOSE RIB FORM BLOCK

| | | | | | | | | | |
|----|-----|-----|-----|-----|-------|-----|-----|-----|-----|
| X= | 0 | 30 | 60 | 90 | 120 | 150 | 175 | 200 | 220 |
| Y= | 208 | 207 | 203 | 197 | 187.5 | 173 | 154 | 126 | 90 |



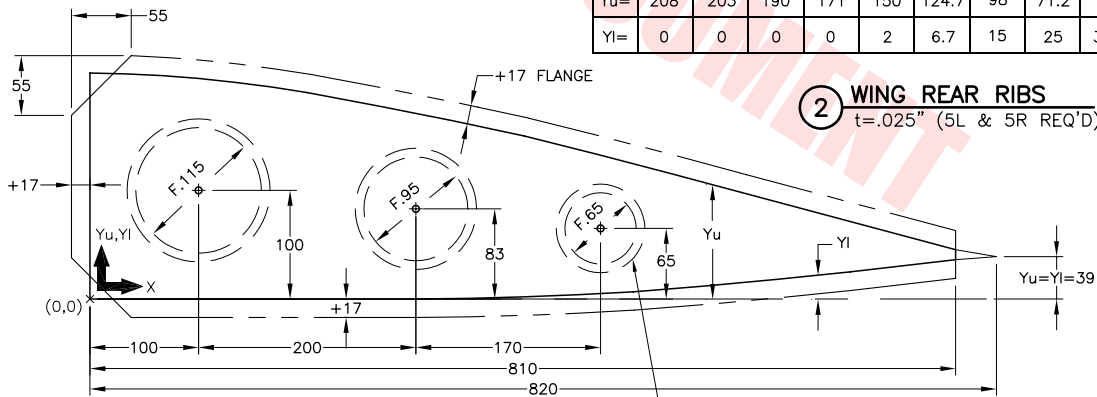
1 WING NOSE RIBS
 $t = .025"$ (6L & 6R REQ'D)



REAR RIB FORM BLOCK

FLANGED LIGHTENING HOLES (i.e. F.65, F.95, F.115)

| | | | | | | | | | |
|-----|-----|-----|-----|-----|-----|-------|-----|------|------|
| X= | 0 | 100 | 200 | 300 | 400 | 500 | 600 | 700 | 810 |
| Yu= | 208 | 203 | 190 | 171 | 150 | 124.7 | 98 | 71.2 | 42 |
| Yl= | 0 | 0 | 0 | 0 | 2 | 6.7 | 15 | 25 | 37.8 |



2 WING REAR RIBS
 $t = .025"$ (5L & 5R REQ'D)

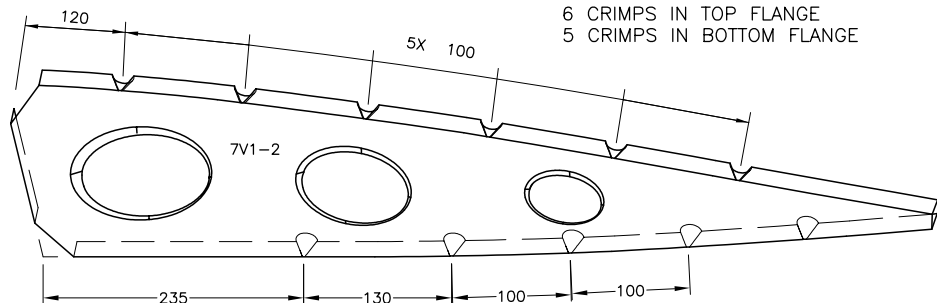
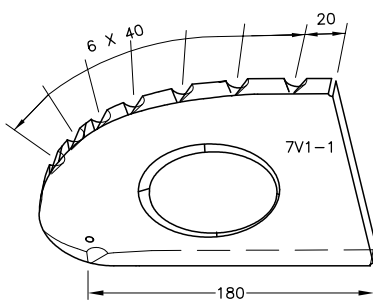
THE LEFT & RIGHT REAR RIB 7V1-2K AT STATION 480 (RR#1)
 DO NOT HAVE THE 65MM FLANGED LIGHTENING HOLE TO MAKE
 ROOM FOR THE WING TANK OUTLET

2K WING REAR RIBS
 $t = .025"$ (1L & 1R REQ'D)

7 CRIMPS IN TOP FLANGE
 1 CRIMP IN BOTTOM FLANGE

CRIMP POSITIONS

6 CRIMPS IN TOP FLANGE
 5 CRIMPS IN BOTTOM FLANGE



FLANGED LIGHTENING HOLE IN THE
 SAME DIRECTION AS THE RIB FLANGE