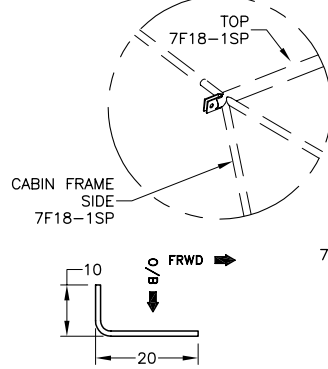


CUT-OUT TO GO AROUND THE CABIN FRAME WING ATTACHMENT: USE A HIGH SPEED HAND GRINDER.



7F19-9M

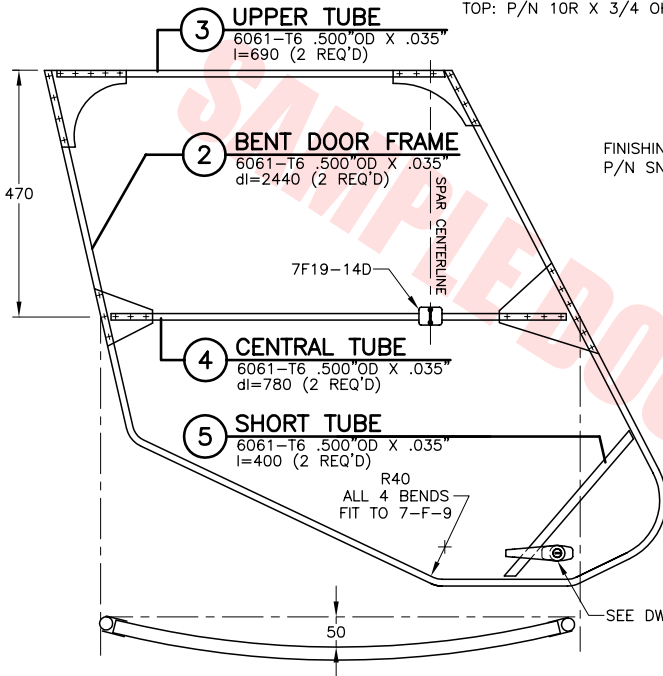
7F19-8M

1 WINDOWS
POLYCARBONATE t=.040" (1 REQ'D)
TOP AND DOOR 4X8FT SHEET

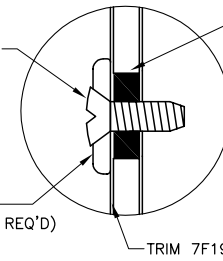
8M SIDE WINDSHIELD TRIM
t=.025" (2 REQ'D)
l=600

9M TOP WINDSHIELD TRIM
t=.025" (1 REQ'D)
20 X 920

11M FORMED WINDSHIELD
CLEAR PLEXIGLASS (1 REQ'D)
SCREWED ALONG TOP & SIDES TO CABIN FRAME (SILICON ALONG THE FRONT EDGE WITH THE SKIN 7F14-4)

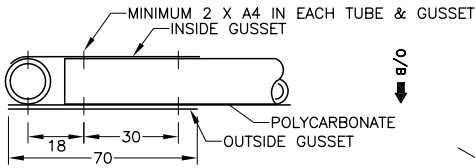
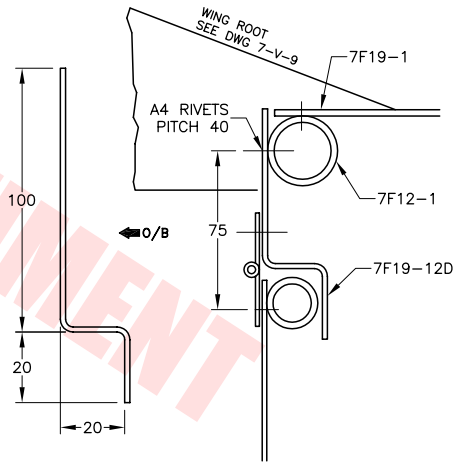


OVAL HEAD SECREWS:
SIDE: P/N SNST18-P (18 REQ'D)
TOP: P/N 10R X 3/4 OHA (9 REQ'D)

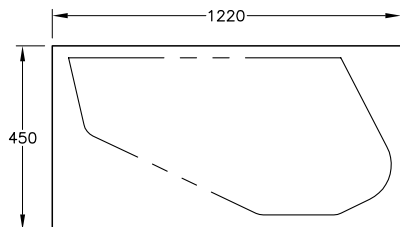


DRILL & CLECO WITH #40 HOLE THROUGH WINDSHIELD AND CABIN FRAME. REMOVE WINDWHEEL TO ENLARGE THE HOLES IN PLEXIGLASS TO 1/4" DIAMETER: USE A STEP DRILL (UNIBIT). INSERT PLASTIC BUSHINGS 1/4" O/D POLYTUBE L=1/8" IN EACH HOLE

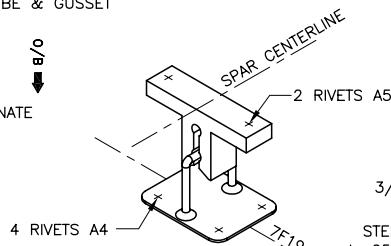
FINISHING WASHERS
P/N SNW-2012 (27 REQ'D)



6 ALL GUSSETS
t=.025" (2 REQ'D)
CUT FROM 80 X 900



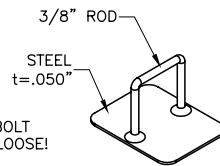
7D DOOR SIDE
t=.025" (2 REQ'D)



10D DOOR CLASP
PLASTIC (2 REQ'D)

12D DOOR SILL
t=.025" (2 REQ'D)
dl=138 l=812

13D DOOR PIANO HINGE
l=800 (1 REQ'D)
MS20257-1



14D DOOR RETAINER
WELDED ASSEMBLY (2 REQ'D)

STOL
CH 701

FORMED WINDSHIELD, DOORS & WINDOWS
(DOORS HINGED UP)
COPYRIGHT © 2001 ZENITH AIRCRAFT CO. WWW.ZENITHAIR.COM

7-F-19

EDITION: 4th 06/2001