

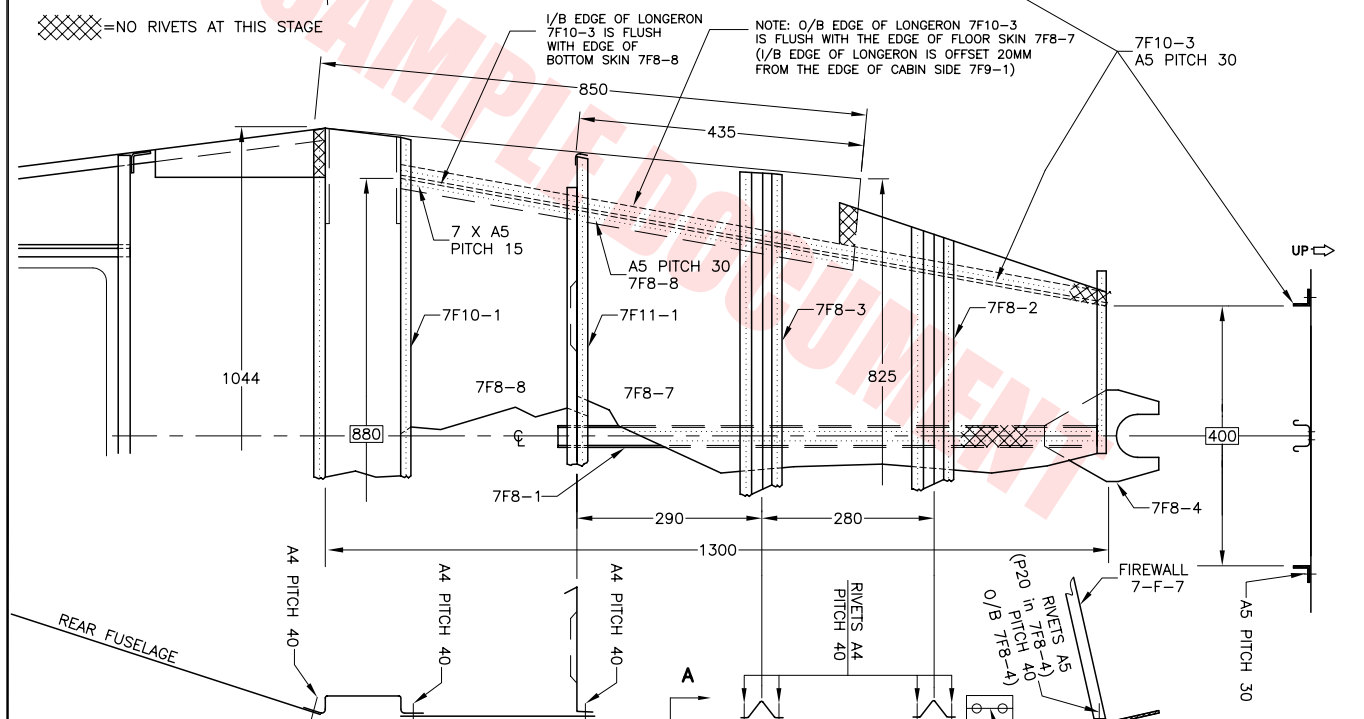
BOLTS AN3-5A
2 AT TOP
2 MIDDLE
2X2 BOTTOM

NO RIVETS AT THIS STAGE

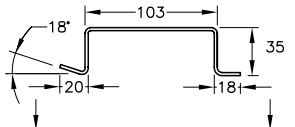
1/2 EDGE OF LONGERON 7F10-3 IS FLUSH WITH EDGE OF BOTTOM SKIN 7F8-8

NOTE: O/B EDGE OF LONGERON 7F10-3 IS FLUSH WITH THE EDGE OF FLOOR SKIN 7F8-7 (1/2 EDGE OF LONGERON IS OFFSET 20MM FROM THE EDGE OF CABIN SIDE 7F9-1)

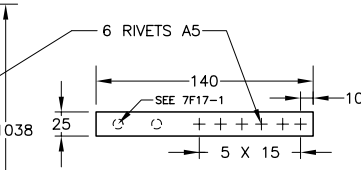
7F10-3 A5 PITCH 30



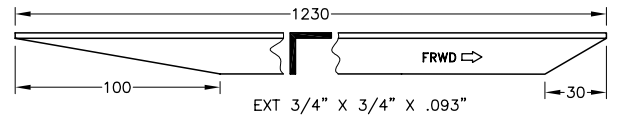
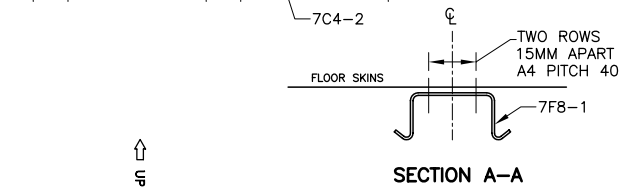
$I=1038$
 $dI=208$



1 BOTTOM CHANNEL
 $t=.032"$ (1 REQ'D)



2 CHANNEL DOUBLER
 $t=.063"$ (4 REQ'D)



3 FRONT BOTTOM LONGERON
 $I=1230$ (2 REQ'D)
(POSITION WITH DIMENSIONS 400 AND 880 ABOVE)